

## They're First And Last



Mrs. Anne Bini, at left holds her son shortly after his birth January 3. He was the first Belleville baby born in the new year. At right is

Mrs. Anne Bini, who holds her son Thomas. He gained the distinction of being the last baby born in 1962 at Clara Maass Memorial Hospital.

## Belleville Mothers Produce Two Sons As Year Bows Out

New Year's Eve was a busy time for the staff at Clara Maass Memorial Hospital.

He covered a number of aerial miles delivering new babies to five happy mothers within the first day of the new year.

Mrs. Anne Bini, 29 Lincoln Avenue, managed to claim a 1952 income tax deduction when her son, Thomas, was born just at the close of the year.

Mrs. Marie Drake, 21 Reservoir Place, was honored with the first baby of the year of her town. He appeared at Clara Maass Memorial Hospital, January 3rd, weighing in at 9 pounds, 15 ounces.

Mrs. Doris Guarino of Newark, also had a close race with the staff.

Twenty-four seconds after midnight on New Year's Day as neighborhood bells were ringing and everyone was wishing each other a Happy New Year, the lusty shouts of newborn, Anne-

Rocco, could be heard throughout the corridors as he made his debut.

Young Anthony was the first baby born in the State.

Parent-Teachers To Hold Card Party January 25

The PTA of School 3 will hold its Annual Card Party in the school's all-purpose room on Friday, January 25, at 8 p.m.

Ways and Means chairman, Mrs. John Giordano and Mrs. Thomas Rabito are in charge of the event, which is the only fund raising program for the PTA in this school year.

Dessert and coffee will be served. There will be door prizes. Tickets may be obtained from any school 3 student or purchased at the door.

## Navy Veteran Leaps To His Death From Fourth Floor Hospital Room

William James, a 35-year-old Navy veteran and father of four, died instantly Monday morning when he leaped from a fourth story window of the East Orange Veterans Hospital, January 7.

Miss Marion Coleman, a ward nurse who witnessed the leap, said James opened a window, and jumped before she could do anything to prevent it.

Hospital authorities said James, who lived at 94 Washington Avenue, had been despondent over family matters. His wife Melvina, had been hospitalized, but is now at home.

Services were January 14 from William V. Irvine and Son Funeral Home, 26 Washington Avenue, at 10 a.m. Interment will be in the family plot at Meadowdale.

He is survived by his wife Melvina, his mother, Mrs. Mary Pevey James, Meadowdale, Miss, a brother also in Mississippi, and his six children, Sandra, Linda, William, Deborah, Amy, and David.

## Customers Vote In Food Fair Checker Contest

The new U. S. Congress is just convening, but already another election is getting under way at some 500 Food Fair supermarkets from Rhode Island to Florida.

Shoppers will be asked to vote for their favorite checker during the next two weeks. A tally of these votes, along with an evaluation of checkers' performance by store managers, will determine the winner in each store.

Who's being elected? Food Fair's Checker of the Year. The one employee selected from thousands of checkout personnel who will compete in the International Checker of the Year Program sponsored annually by the Super Market Institute, a national trade association.

First prize is a two-weeks vacation for two in Hawaii.

Shoppers will be asked to vote for their favorite checker during the next two weeks. A tally of these votes, along with an evaluation of checkers' performance by store managers, will determine the winner in each store.

(Continued On Page 3)

## Belleville Boy Seized, Suspected Ring Member

A Belleville youth and his Newark companion, both 18, were held in Passaic County Jail today under \$2,500 bail and charged with three counts of automobile theft.

Frederick E. Scheel, 138 Joralemon Street, and Peter P. Zelinski, 456 South 10th Street, Newark, were seized by Town and State police January 11 when Zelinski drove up to Scheel's home in a stolen car. A second stolen car was found at the rear of the

School home. Police also recovered a number of bills of sale which had been reported stolen from a garage.

Police said the pair are believed to be part of an automobile theft ring whose routine was to steal cars, match them up with the stolen bills of sale, obtain new registration papers and sell them to unwary customers.

The pair were to be arraigned in Clifton January 16.

## Nutley Men Are Arrested After Looting Cars

Two Nutley men were arrested by Glen Ridge police last Wednesday as they looted a car in a hospital parking lot, and apparently cleared up a rash of automobile looting.

Police identified the pair as John Eulo, 19, 73 Kingsland Avenue, and Kenneth D. Rinderer, 22, of 122 Lakeside Drive, both Nutley. They are being held at Glen Ridge while police continue their investigation of the pair's activities.

The prisoners were said to have admitted the theft of various articles from eight cars throughout Nutley, Belleville and Bloomfield. Included in the loot was a snow tire and a fur coat, the owner of which has not been located.

Also stolen, and later recovered by police, were tools, floor mats, tennis shoes, and miscellaneous articles, which were found in their car.

Belleville CD Plans Public Meeting Jan. 24

Raymond E. Mertz Jr., director of Civilian Defense for Belleville has arranged with the town officials to hold a general public meeting at the Town Hall at 8 p.m. January 24.

The Department of Defense for the State of New Jersey, the Essex County Department of Defense and the local council think the general public should welcome the opportunity to discuss with C.D. officials from state and county levels, the various functions and services offered by Civil Defense for the protection of residents during natural or man-made emergencies.

County and state officials will be on hand to tell their story and answer questions from the audience.

Twenty-one other municipalities of Essex County are holding similar meetings at various dates.

Director Mertz said that due to the present state of international affairs, and the number of natural disasters, the public should be more fully informed as to what procedure to follow to better protect themselves in the event of any emergency.

The meeting will be held in the Council Chamber.

WORLD BOOK ENCYCLOPEDIA, Atlantic City edition available at Nutley Belleville, full of part time, Tel. 7-3586 or CE-2344.

## Times Sold Out A Complete Edition

Never let it be said that a Belleville resident lacks interest in his own home town.

The January 3 edition of The Times - News sold out completely at newsstands throughout the town last week. Collectors, who usually return unsold copies of the newspaper, went home empty handed. Not a single dealer returned even one Times-News.

It wasn't an accident. The Times-News strives to bring its readers the most complete coverage it can provide. It's the only newspaper in the state which worries about Belleville.

Two Belleville High School students skipped school last Tuesday, and within two days their routine escape snowballed into two stolen cars, a 900 mile trip south, and a cool Florida jail cell where they face possible charges of auto theft.

Belleville detectives pieced together this story.

The boys, classmates at Belleville High School, "borrowed" the family car, skipped classes, and drove off for a tour of the countryside. Somewhere in West Milford the truant twosome lost control of the car and careened into a tree.

Fearing parental wrath, the two hastily scribbled a note to parents explaining the situation. Then they stole a station wagon belonging to a Nutley resident and headed south.

Thursday, inquisitive police at Clearwater, Fla., spotted the youthful pair driving about town and started asking questions. They were jailed when they didn't have the answers.

Police said the pair may next attend classes at a very different kind of "school" where attendance is compulsory.

Student Steals Tests, Cops Say

A 20-year-old Belleville sophomore attending Newark State College was arrested January 8 and charged with the larceny of examination papers from the State Board of Education.

Police identified the youth as Richard M. Sepe, of 158 Cedar Hill Avenue, whom police said stole three high school equivalent tests of the college. He was arrested after attempting to sell the tests to officials of Newark Preparatory School at 1019 Broad Street.

HE NEEDED MONEY

Sepe told police he needed the money to pay school tuition and for Christmas gifts. His arrests came about after the youth accepted marked money from Lt. Joseph P. Ryall, a member of the prosecutors staff who made the arrest.

Sepe stole the tests, one French and two English, from the school where he had formerly worked as proctor.

He was arraigned before Essex County Judge Roger M. Yancy, and later released in his own custody. The complaint will be held for Grand Jury action.

Insurance Man Marks His Fifteenth Year

Michael V. Albertine, a former Board of Education member and now an insurance representative, recently passed his fifteenth year with the U. S. Fidelity and Guaranty Co. of Orange. He has offices at 631 Joralemon Street.

Notice

Any picture submitted to this newspaper for publication will be available for return to its owner after the picture appears in print, provided the picture is judged to be within one month of publication.

Belleville Couple Celebrate 50th Wedding Anniversary

Fifty years of marriage will be celebrated Friday by Mr. and Mrs. Stanley Stryjewski of 462 Joralemon St. The couple are shown above in a recent photo.

Mr. and Mrs. Stanley Stryjewski (Strat) of 462 Joralemon Street will be honored at a reception given by their children on January 19 at the Belleville Elks Club.

The occasion will be the 50th wedding anniversary of the couple. Two hundred friends and relatives will help them celebrate their "Fifty Golden Years" of happiness.

The couple were married at St. Stanislaus Church of Newark January 19, 1913. After living in Newark for two years, they moved to their present address where they have made their home for the past 48 years. Before his retirement ten years ago, Stryjewski was employed by the County of Essex.

The couple have three children, Peter, Edmund, and Mrs. Stella Zborowski. They have three grandchildren, Karen Zborowski and Henry Zborowski of Bloomfield and Susan Strat of Nutley.

Harold C. Widman

Harold C. Widman of 839 Schuyler Way, Union, New Jersey, has been named Director of Public Relations and Personnel at Clara Maass Memorial Hospital.

Widman, who joined the hospital staff as Personnel Director last September after having been associated with Western Instrument Division - Daystrom, Incorporated, for 27 years.

He replaces Stanley G. Freck, Director of Public Relations and Development, who retired December 31, 1962.

## Belleville Truants Arrested In Florida With Stolen Car

Two Belleville High School students skipped school last Tuesday, and within two days their routine escape snowballed into two stolen cars, a 900 mile trip south, and a cool Florida jail cell where they face possible charges of auto theft.

Belleville detectives pieced together this story.

The boys, classmates at Belleville High School, "borrowed" the family car, skipped classes, and drove off for a tour of the countryside. Somewhere in West Milford the truant twosome lost control of the car and careened into a tree.

Fearing parental wrath, the two hastily scribbled a note to parents explaining the situation. Then they stole a station wagon belonging to a Nutley resident and headed south.

Thursday, inquisitive police at Clearwater, Fla., spotted the youthful pair driving about town and started asking questions. They were jailed when they didn't have the answers.

Police said the pair may next attend classes at a very different kind of "school" where attendance is compulsory.

Drummers, Buglers Are Invited To Join Corps

The 40-member Pioneer Drum and Bugle Corps from Kearny began a search for 30 additional members, said Herbert H. Crookall, director.

Eight members of the elite corps are from Belleville, and make a twice yearly march down town streets. Phyllis Amato, Belleville, is color guard.

Over the past three years, the marching unit has placed fifth among 28 junior and senior corps entered at the Atlantic City competitions.

Interviews will be held Monday and Tuesday nights at Headquarters of the Pioneer Drum and Bugle Corps, 600 Elm Street, Kearny. Youngsters between the ages of 12 to 21 are sought.

D'Avella Gives His Two-Page Ruling On Case

January 4th Town Attorney Thomas D'Avella ruled that ousted Town Manager William A. Sommers on November 19th, 1962 illegally fired Town Registrar of Vital Statistics Ralph Risoli.

D'Avella's opinion was sought by Acting Town Manager Charles B. Tedesco, himself an attorney.

D'Avella's letter to Tedesco follows:

In reply to your inquiry as to whether the office of Registrar of Vital Statistics, presently held by Mr. Ralph Risoli, is vacant, I advise you that on July 1, 1962, when the Council-Manager Plan went into effect in the Town of Belleville, please be advised that my investigation discloses that Mr. Ralph Risoli was appointed Deputy Registrar on August 25, 1959, and that Mr. Nunzio B. Piro, Director, (Walsh Act) appointed Mr. Ralph Risoli commencing November 1, 1961, as Registrar of Vital Statistics in accordance with the following statute:

"The term of office of local Registrar shall be three (3) years and he shall serve until his successor has been appointed or qualified." (laws 1958, chapter 205)

On November 13, 1961, by letter so dated, F. Merton Saybolt, State Registrar, approved the appointment of Mr. Ralph Risoli as Registrar of Vital Statistics for a term of three (3) years effective November 1, 1961.

In view of the foregoing and the office of Registrar of Vital Statistics came to an end in the Town of Belleville on July 1, 1962, in accordance with the following provision in the Optional Municipal Charter Laws of 1950, c-210 (Faulkner Act):

"At 12 o'clock noon on the effective date of an optional plan adopted pursuant to this act, all offices then existing in such municipality shall be abolished and the terms of all elected and appointed officers shall cease and determine; provided that nothing in this section shall be construed to abolish the office or terminate the term of office of any official or employee now in office by any tenure of office law."

If the municipality is operating under the provisions of Title II of the Revised Statutes (Civil Service) at the time of the adoption of the optional plan under this act, nothing herein contained shall affect the tenure of office of any person holding any position or office coming within the provisions of said Title II as it applies to said officers and employees.

The above section of the Optional Municipal Charter Law of 1950, c-210 (Faulkner Act) has been judicially reviewed in the case of Beirne v. Gangemi, by the Superior Court of N.J. (Appellate Div.) and it was held that the Council held in the case of Beirne v. Gangemi, that positions in the unclassified services are protected by virtue of Section 207, of the above which protects any person who holds office by virtue of a contract of office, and further that the person holding such office is protected by general law as provided in R.S. 11:28-2, which reads as follows:

(Continued On Page 3)

## DiRuggiero Outlines The New Budget

DiRuggiero Raps Mrs. McCool's 'Power Politics'

The proposed budget for Belleville's schools came in for some praise by Dr. Frank DiRuggiero, a School Board member for the last seven years, who also took some potshots at his feminine adversary, Mrs. Thomas F. McCool, whom he charged with being an uninformed member who was preoccupied by "power-play" politics.

Not so, said Mrs. McCool, who has long maintained that her chief concern is the welfare of Belleville's school children and its good economic health.

Mrs. McCool has consistently opposed nearly every resolution which indulges in "unadulterated power-play" politics aimed at the lowest common denominator of the community.

Countless hours of the entire educational staff were devoted to developing the school budget long before the Board of Education began its budget meetings, said DiRuggiero. Of the many budget meetings then held by the board, Mrs. McCool attended only one meeting, he observed; and added that she was present only as an observer.

"Neither by participation nor experience is Mrs. McCool qualified to offer her own school budget," said DiRuggiero. "As a puppet of the Town Council Mrs. McCool is unequalled to weigh properly the problems of a budget for our school system."

Facts In Error

"When Mrs. McCool charged in her recent release to another newspaper that teachers should forego increases this year and lighten their belts," she failed to point out that the average per capita income of \$326 in the last in the County.

Other districts are giving average increases of \$400, \$500, and \$600. If all board members took the same position on salaries as Mrs. McCool, the Belleville schools would become an educational wasteland, deserted by all the better teachers for jobs in districts that show proper respect for their teachers."

The proposed school budget makes a lower demand on taxpayers than any future budget is likely to make.

The budget includes increase in debt service of \$96,915 to pay in 1963-64 to replace worn out textbooks for teachers to work with expanding enrollment in the high school, and \$7,559 for better guidance services. \$5,000 goes toward better science, language, and mathematics equipment, an \$8,200 increase to replace worn out textbooks, and \$10,072 legislative mandatory increase for Essex County Board Employees Pension Fund.

A Slight Increase

An additional \$75,650 is earmarked for teacher salary in the field.

The next school budget, 1964-65, will have to include over \$100,000 payment on the principal of new school bond indebtedness, plus provisions for additional staff arising from operation of the K-6-3-3 plan, and custodial and maintenance staff and operational costs for the new high school.

A larger amount can be applied from balances to reduce the tax impact on the citizens.

A Conservative Budget

The proposed school budget for 1963-64 requires \$5-40 additional taxes from the average homeowner, slightly more than ten cents yearly. Few, indeed, are the wage earners who will not have increases greatly in excess of ten cents a week.

"This conservative budget will do a good job for Belleville schools in 1963 - 64," concluded DiRuggiero. "It should be approved by our citizens on February 13."

"This will save the waste of money that a thousand dollars required for additional elections. This budget favors nobody but the school children."

Tri-Town Will Hear Speakers

The monthly business meeting of the Tri-Town Business and Professional Women's Club of Belleville, Bloomfield and Nutley will be held on Thursday, January 24, at the Park Methodist Church at 6:45 p.m.

After a short business meeting a Pre-Retirement Clinic will be held, and the public is invited to attend. The clinic will start at 8 p.m.

John J. Mehegan, district manager of Social Security, Bloomfield office, will speak on Social Security.

Mrs. Herman Chester of Bloomfield will speak on "Mutual Funds." Mrs. Chester is a former teacher. She is past president of the Essex County Education Association, past president of the Newark Teacher's Association; a former member of the Board of Examiners, Newark Board of Education, and was editor of N.T.A. News, also former business manager of "Visual Aids Digest."

She is now a registered representative of the firm of Edward W. McWhood, investment securities, Bloomfield, and has been a member of the field investment securities, specializing in mutual funds.

Mrs. Julia Bohn of the Massachusetts Mutual Life Insurance Company will speak on Retirement Insurance. Mrs. Bohn is a graduate of Emerson College, a former copywriter and book store manager. She is a member of ZONTA; a member of National Association of Underwriters. She has been with Massachusetts Life for six years, now specializing in the field.

Mystery Man Is Spotted By A Fast Times Reader

A Belleville insurance man took one look at the picture on the Map Page last week and recognized John Muziccato as the unidentified customer parked at the Bee Esso Service Station at Franklin Avenue and Joralemon Street.

He was Peter A. Spera who lives at 32 Oak Street with his wife Anne and their four children. Peter said John was a close acquaintance of the family, and recognized him right off.

Peter has read The Belleville Times regularly and is now an agent for the Metropolitan Life Insurance Co. in Bloomfield. He bows in his spare time.

A new contest is now under way. Be sure you follow the rules.

Identify the person circled in the picture and name the place where the picture was taken.

There is only one correct answer to the question, and when a winner is announced the source for that answer will be revealed.

Please note that the answer must be delivered in person at Washington Avenue, or by mail. Phone calls will not be accepted. The prize will be awarded to the one who first submits the correct answer.

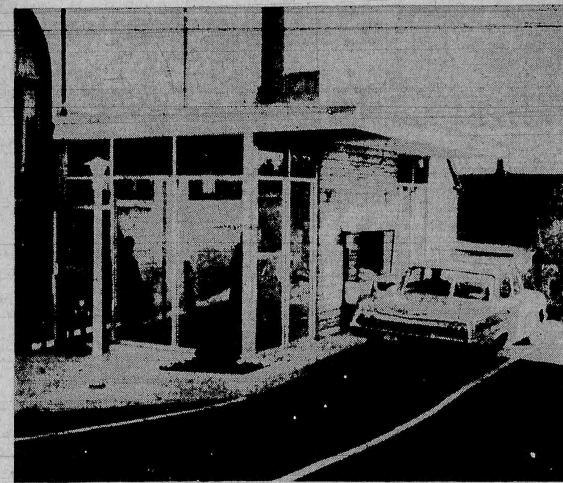
A decision by The Times as to the winner is final and may not be disputed.

Only one person in a family may submit an answer.

The contest deadline is 5 p.m. on the Monday following the publication of the contest picture.



# Now You Can Drive Up, Walk In, And Bank It



Belleville Banking customers can now stroll into the ground-level office of the Fidelity Union Trust Co., or drive in to make deposits, withdrawals, or conduct other business with a minimum of effort.

Frank J. McFadden, vice president and officer in charge of Fidelity's Belleville Office at the corner of Washington and Belleville Avenues, reported today that use of the bank's new drive-in, walk-up facility and its 40-car parking area has far exceeded expectations.

Customer comments, since the facilities were opened last November, have been that their banking has been made easier and more pleasant.

Cars traveling north on Washington Avenue turn right, and into the driveway leading to the drive-in, walk-up and the parking lot.

Cars traveling south on Washington Avenue, or traveling on Belleville Avenue, turn into Greenwich Street, go around the block, and enter the drive-in facility from Washington Avenue.

McFadden said that the interior of the bank will be completely refurbished to provide a most modern and friendly atmosphere. When the work is finished, there will be a rear entrance to the banking floor from the parking lot.

"Banking with Fidelity in Belleville, one customer said, 'is now a matter of a few short steps during even the most crowded periods.'"

### YOU AND YOUR INSURANCE

(A public service column about all forms of insurance.)

#### Review Automobile Insurance Coverage

How much insurance should you carry on your family car? Unfortunately, there is no pat answer but it is important to review your coverages periodically to be certain you have adequate protection.

This is particularly important in the case of liability insurance—the kind that pays the cost of claims against you in an accident which results in death, injury or property damage to others.

Every state has a law under which a driver who is unable to furnish proof—either by producing an insurance policy or a substantial bank balance—that he was financially responsible at the time of an accident faces the loss of his automobile registration or driving license, or both. These laws, which are subject to change, specify minimum limits of coverage.

You should, however, consider more than minimum insurance coverage, depending on your financial resources and the extent of property you need to protect. Without adequate coverage, a judgment against you could take away your home and life savings.

Many auto owners also insure their cars for "comprehensive" and collision damage, for the costs of medical care and even for accidents caused by uninsured drivers. Comprehensive insurance protects the car owner from loss by fire, theft, windstorm, hail, flood, glass breakage and many other perils.

Your independent agent can provide advice about the insurance coverage best suited to your family needs.

This column will be glad to answer any questions you may have about property and casualty insurance. Send them to:

The Nutley Sun  
to the attention of  
Carl A. Orzech or to  
the Orzech Agency,  
43 Washington Avenue  
Nutley 10, New Jersey

### Census Bureau To Conduct Survey Of Senior Citizens

The U. S. Bureau of the Census will conduct a special survey of "senior citizens" in connection with the January Current Population Survey.

The survey will cover living arrangements, medical and dental costs, work status, insurance, home ownership, income and related items. Persons 62 years of age and older residing in Current Population Survey sample households will be covered in the survey.

The special questions to be asked of older people will be in addition to the regular monthly unemployment.

## 1963 RAMBLER WINS "CAR OF THE YEAR" AWARD

from Motor Trend Magazine

Each year the automobile industry eagerly awaits the selection of one car as "Car of the Year" by Motor Trends impartial experts. For 1963, this most-wanted, hardest-to-get honor goes to Rambler...for outstanding design achievement and engineering leadership. Read why Rambler won this prized award over all other cars.

Here are some of the experts' reasons:

"New styling is based on lean, clean lines that are apparent from almost any angle."

"Motor Trend's Cars of the Year prove their mettle in actual testing, confirm their engineering excellence, reliability, sturdiness and performance."

"Quality has always been one of American Motors' largest selling points."

"In unitized bodies, which American Motors pioneered, this latest design represents a real advancement...biggest single reason we chose Rambler Car of the Year."

"This new construction method results in a unit so strong it'll take punishment longer and naturally hold its resale value."

"The interiors of both the Classic and Ambassador are roomy and comfortable...offer plenty of legroom."

"A good safety device. Self-adjusting brakes and dual master cylinders...if one system fails, the other brings the car to a safe stop."

"Trunk is large. Low loading lip makes it simple to load."

"Our Classic...with the rugged, ohv-in-line Six...gave a high of 26.7mpg highway cruising...mixed city and freeway gave 23.4."

"A sportier, more performance-oriented vehicle, the Ambassador V-8 should satisfy the wants of the Rambler buyer who favors performance."

"There isn't any pitch or choppy ride noticeable even on rough roads."

"Summing up...it looks like the new Rambler will be an even better buy than it has been in previous years."

Why don't you look at the 1963 Rambler? Best-selling Rambler ever built!



American Motors Dedicated to Excellence

## SCHIFTER RAMBLER INC.

89 WASHINGTON AVE. NO 7-2233 NUTLEY

## Davis Foresees Liberalization Of Banking Laws

In his letter to stockholders and friends of Fidelity Union Trust Company, made a part of the bank's 1962 annual report, C. Malcolm Davis, president, expressed confidence that New Jersey's archaic branch banking statutes soon will be modified. The report released today revealed that Fidelity attained year-end record highs in all significant categories and retained its position as New Jersey's largest bank in terms of deposits, resources and capital funds.

Davis, commenting about this state's unduly restrictive law governing the establishment of branch banking offices, said: "State and Federal banking officials and students of the New Jersey business scene have described our present restrictive branch banking laws as an artificial economic brake. Such a brake seriously restricts the contribution which our banking system should make to New Jersey's statewide growth."

"We are confident that the voices of New Jersey bankers, dedicated to the interests of all the people of the state, added to those of public officials, dual banking system and add considerably to the total New Jersey economy."

## Army M.P.



CHARLES BOYCE

Army Pvt. Charles R. Boyce, son of Mr. and Mrs. Charles Boyce, 196 Washington Avenue, recently ended eight weeks of military police training at the Army Training Center, Fort Gordon, Ga.

Boyce entered the Army last August and took basic combat training at Fort Dix. The 20-year-old soldier is a 1960 graduate of Belleville High School.

## New Stamps Are Described By Acting PM

Joseph Benucci, our new Acting Postmaster, in one of his first official acts, said that the Post Office Department will issue a commemorative stamp honoring the late President Franklin D. Roosevelt on the anniversary of her 79th birthday, next October 11. Mrs. Roosevelt becomes the first First Lady since Martha Washington to appear on a U.S. postage stamp.

Benucci also stated that word was received from Postmaster General Day's Office that famed aviatrix Amelia Earhart, who with her co-pilot was lost in the Pacific in 1937, will be the first woman to be honored on a U.S. commemorative stamp since '48. The stamp, an 8-cent airmail, will be issued on July 24, 1963, her birthday anniversary.

Benucci also announced the Department's plan to issue a total of 15 commemorative stamps for the year 1963 beginning with the "Emancipation Proclamation" stamp to be released in mid-February. The Science Stamp, honoring the 100th anniversary of the National Academy of Science

is scheduled to be released in the fall, and the "Gettysburg" stamp, one of five Civil War Commemorative stamps to be issued in Gettysburg, Pennsylvania on its anniversary date, July 1.

Along with the mentioned stamps are 11 other commemoratives devoted to significant anniversaries and current international events. Among the many planned is one of "Montgomery Blair", originator of the Universal Postal Union, a plan in which the nations of the world agreed to carry each other's mail. He also served as President Lincoln's Postmaster General. The Blair stamp, probably a 15-cent airmail, will be issued in May, the 100th anniversary of the first International Postal Conference that met in Paris, France.

Scheduled for release in North Carolina on or about March 24 is the "Carolina Charter" stamp honoring the State's 300th anniversary. In June the "West Virginia" commemorative will be issued in conjunction with the West Virginia Centennial Commission. Also in June, a "Food for Peace" stamp will be released to coincide with the meeting of the World Food Congress. The stamp will show the role played by the United States in sharing food and agricultural "know how" among the nations of the free world.

In view of the success of "The Smoke Signal" stamp and the "Breeding Up" commemorative, two outstanding reproductions of famous American paintings, the Department plans to reproduce still another which is scheduled for fall release.

In 1963, Benucci said, six new regular stamps will be issued to round out the program with the re-appearance of a new 5-cent Christmas stamp, the second of a series that was so well received by the public in 1962.

## MOST FIRE DEATHS ARE FROM SUFFOCATION

You don't have to stand on your head to escape gases in a smoke filled dwelling, but crawling on hands and knees with mouth and nose covered will certainly help. Contrary to popular belief, relatively few people are actually burned to death in a home fire. Most die from suffocation, your chances of escape are better by utilizing better air near the floor.

## CHILDREN'S TV

"Everybody is in agreement that the quality of children's television is bad. It seems to me that there is something even worse—the sheer quantity." Bob Keeshan (Capt. Kangaroo).

## Our 20th Anniversary Year Closes with ANOTHER GREAT FINANCIAL REPORT



## ASSETS AT AN ALL TIME HIGH!

Dividends At The Highest Rate In Belleville!

The figures of this 20th Anniversary Financial Statement offer tangible proof that "It Pays to Save at De Witt." Today savers—than ever before in De Witt's history—are enjoying the benefits of their thrift—with dividends at the highest rate on insured savings in the entire area. And it is a mark of De Witt's sound financial condition that this increase in dividends has been accompanied by a further strengthening of De Witt's already strong reserve position. Meanwhile, De Witt's mortgage loan service continued in high gear throughout 1962 as more local families were helped along the road to home ownership with low-cost mortgage financing through De Witt.

Profitable, savings—sound home financing—will continue as the twin features of De Witt's operations for 1963.

## STATEMENT OF CONDITION

December 31, 1962

ASSETS		LIABILITIES & RESERVES	
First Mortgage Loans	\$16,390,359.93	Members' Savings	\$17,364,497.45
Cash on Hand and in Banks	231,676.66	Loans In Process	47,350.00
U. S. Government Securities	1,261,593.75	Other Liabilities	2,266.12
Federal Home Loan Bank Stock	240,000.00	Deferred Income	74,012.26
F.H.A. Improvement Loans	292,468.05	Reserves and Undivided Profits	1,449,528.48
Account Loans	232,486.52		
Office Building & Equipment	247,961.96		
Other Assets	41,208.64		
<b>TOTAL ASSETS</b>	<b>\$18,937,654.31</b>	<b>TOTAL LIABILITIES &amp; RESERVES</b>	<b>\$18,937,654.31</b>

## OFFICERS

Walter Gilby, President; Robert M. Williams, Executive Secretary; Charles M. Nutt, Vice-President; H. Willard Sawyer, Vice-President; John P. Dailey, Secretary; George E. Miller, Treasurer; Charles W. Watson, Assistant Treasurer; Rena F. Lynch, Assistant Secretary; William Abramson, Assistant Treasurer; Edwin B. McCurdy, Assistant Treasurer.

## COUNSELORS

Harry Grifflinger • Smith, Kramer and Morrison Keenan and Flach • Charles A. Gebhardt

## AUDITORS

Trien & Trien, Certified Public Accountants

## DIRECTORS

William Abramson, Siegfried G. Bart, Frank Bridge, Jr., John P. Dailey, Henry A. DePhillips, Walter Gilby, George D. Haslam, Clarence R. Lommer, George E. Miller, Charles M. Nutt, August Plenge, Jr., John L. Plassen, H. Willard Sawyer, Harry Ziegler.

## BELLEVILLE'S HIGHEST RETURN ON INSURED SAVINGS

# 4 1/4%

anticipated for current period

## De Witt Savings

AND LOAN ASSOCIATION

463 WASHINGTON AVE., BELLEVILLE, N. J. • PL 9-5264

Daily, 9 a.m. to 4 p.m.; Mon. Evs. 6:30 to 8 p.m.  
Headquarters for: Insured Savings • Money Orders • Travelers' Cheques • Gift Checks  
Mortgage Loans • Home Improvement Loans • Gas & Electric Bill Payments • Foreign Remittances



VIEW FROM THE SIDELINES

By RAY FERSKO

The Bellboys added another win last Friday as they routed Nutley 37-28. The game was bad, for both teams had no ball control.

Nutley had the least, so they lost. The Bellboys did well on defense and really worked hard to gain possession, but as soon as they got the ball they lost it, so all their hard work was in vain.

On offense the team was giving the ball away as they showed the opposition every move. If it hadn't been for the strategic third period defense, Belleville would have been low man on the totem pole.

As usual the foul situation was poor, and this is against all good concept of defense. On offense the main problem was the lack of patience and the imbalance of the players. Too often there were men coming out of their zone, which made it hard for quarterback Liloia to set up any patterns.

The defensive back control improved greatly as Steve Fox and Bob Hyers contributed most of the rebounds. The offensive boards were also good, but too often the players did not follow up their shots.

The greatest improvement was made from the line as 13 out of 17 free throws were completed for a 76.5 average. This is in sharp contrast to last Tuesday's 18 for 31 against Bloomfield. A good game was played by Freshman Ron Tomaszewski, who came in for Liloia in the fourth quarter. Although he lacks experience now, he should be of great benefit to Belleville in the coming year.

Tomorrow (Friday) the East Orange Panthers stalk to Belleville. During the football season, Belleville suffered its only defeat at the hands of East Orange, so the cagers will have to exert all they have against the Panthers. East Orange is big and are presently leading the Big Ten.

A win against East Orange would be big for Belleville. The Panthers will be tough competition all the way. With a few breaks the Blue and Gold can get into the game, but they'll have to be a lot tougher on defense and not force many shots on offense. One factor in their favor is that they will be playing on their home court and this may trouble the East Orange sharpshooters, who are more accustomed to their large home court. At any rate, it's going to be a rough game and the Bellboys better be a lot more aggressive than they have been, for East Orange will show them no mercy.

Congratulations to the Belleville Girl's Precision Drill Team for their outstanding performance during half time at the Belleville-Nutley game.

Seven-Game Lead Is Held By Parrillo's

In the Wednesday Afternoon Ladies Bowling League, which is held at the Olympic Bowl, Parrillo's team won two games to give them a 7-game lead on the second place team, Gerard Hairdresser.

Roman Furniture took three games from Nat & Doty's Lunchette. It puts them in 3rd place. By winning two games from Gerard Hairdresser, Branch Brook Manor Cleaner steps into 4th place.

Capital Cab won two games from Binky's Hi Balls. All the other teams won one game each. Parrillo's stands in first place for high team single game. They rolled a 514.

Yvonne Cloutier from Parrillo's was the high bowler for the day, she had a 447 series.

	W	L
Parrillo's	37 1/2	16 1/2
Gerard Hairdresser	30 1/2	23 1/2
Roman Furniture	30	24
Branch Brook Clnr	28	26
Greylock Esso	27 1/2	25 1/2
Muscara Music	27	27
Binky's Hi Balls	25 1/2	28 1/2
Capital Cab	25	29
Nat & Doty's	21 1/2	32 1/2
Camarrato's Camp	17 1/2	36 1/2

Complete Heating Systems For All Your Heating Needs Call PLYMOUTH 9-1907 46 Eugene Pl. Belleville

OUR FUEL OIL MAKES WARM FRIENDS

Now new low cost installation prices. Low cost service contract including parts coverage. Convenient monthly budget plan. 24 hour emergency service.

HILLTOP RIVIERA OIL CO., INC.

Kohler's Loses Three Games To McGreevy's

McGreevy's Tavern won all three games from Kohler's Sheet Metal Co. in the Friday Night Ladies Bowling League. Marge Driggs of McGreevy's rolled her highest series to date, with games of 166-200 216 to give her a 582 series.

S. W. Brown, Mortician won all three games from Kohler's Sheet Metal Co. in the Friday Night Ladies Bowling League. Marge Driggs of McGreevy's rolled her highest series to date, with games of 166-200 216 to give her a 582 series.

TEAM	WON
McGreevy's Tavern	30
S. W. Brown, Mortician	30
Gallagher's Tavern	30
The Lounge	30
La Nor's Beauty Salon	28
Belleville Lumber	23
Bay's Drugs	22
Kohler's	21

INDIVIDUALS	Avg.
M. Dikheboom	165
P. Narucki	160
M. O'Neill	155
M. Gorham	151

J.V.'s SUFFER 34-33 SQUEAKER TO NUTLEY

The J.V.'s lost 34-33 in the last few seconds of a very tight game with Nutley. As in the Varsity game, Nutley took a 6-5 lead in the first quarter, scoring 2 of the 6 on foul shots.

Belleville, led by Len Luongo, Frank Ray, Walter Fibs and Ron Tomaszewski, scored 5 points to Nutley's 5 in the second period, thus, at the half, the score was 11-10.

Nutley, led by tough rebounder Lenny Sherman, scored 12 to Belleville's third period 11 and then finally won the game with 11 more in the last period.

FRESHMEN CONTINUE WINNING

Led by Rich Luongo and Ed Gutknecht, the freshmen dealt Nutley a 49-33 loss. The game was Belleville's right from the start as Luongo scored 8 points in the first quarter and the Nutley team hit for 7. This winning streak lasted for the remainder of the game with Gutknecht and Luongo doing the scoring. The way the freshmen are shaping up, they may very well continue winning for the rest of the season.

WRESTLING TO RESUME

The wrestling team resumes its season with 7 more meets in the next three weeks. Starting next Thursday, there will be up-to-the-minute coverage in The Belleville Times-News.

J. Hovsepian	150
C. Zampini	149
M. Kohler	146
M. Hunter	139

McGreevy's Tavern leads the league with high team series of 187, followed by Bay's Drugs with a team series of 176, and La Nor's with a series of 172.

Team single high game is held by Bay's Drugs with 653. In second place is McGreevy's with 650 and in third place we have Belleville Lumber with 621.

W	L
Mickey's Cycle	33 18
Conley	32 19
Edwards	30 21
Porcella Jewelers	28 1/2 22 1/2
Garry's Coffees	28 23
Olympic Bowl	27 1/2 23 1/2
Mattia Offet	27 24
Jannarones	27 24
Anonymous Four	27 24
Lisante	26 1/2 24 1/2
Johannie's Service	26 25
Galaxy	25 1/2 25 1/2
S. Goski Trucking	25 26
No-Life	24 27
Milastis	22 1/2 28 1/2
Ross Wood Work	22 29
The Vikings	19 1/2 31 1/2
C. DeSantis	18 1/2 32 1/2
Kondreck	18 33
Broadhurst	

Tuesday Night Ladies League Standings Told

After the lay-off of bowling over the holidays the Tuesday Night Ladies League got off to a slow start. There weren't any sensational games or series. Still holding first place is Mickey's Cycle, but close behind them is Gorley's.

Marie Gorham of Mickey's Cycle holds high series of 547 which she rolled the last Tuesday before the holidays. Faith MacDonald of Garry's Coffees still holds the high game of 225.

Girls holding top averages are Faith MacDonald, 157; K. A. y Brandt of Lisante's team, 152.

Orechio Again Takes Lead In Olympic League

The Carl Orchio Agency bowling team took all three games from the A & F Auto in the Olympic Bowling League, thus recapturing their first place spot.

Carl Orchio Agency 32 1/2 21 1/2 Costa's Deli 32 22 White Oak Pharmacy 31 23 Barbone's Chevron 27 27 Rose Realty Agency 26 28 Belleville Travel 25 1/2 28 1/2 A & F Auto 24 30 Nutley Sun 18 36

HAVE A CAREER NOT JUST A JOB!

Learn Cosmetology

PERMANENT HAIR REMOVAL

World famous Kree Method prepares you for a rewarding full or part time career. Training hours to suit your schedule. Age no barrier. Send for free booklet "It" today! RYANT 9-4210.

Oara Arfian, Director

KREE INSTITUTE

Customers (Continued From Page 1)

A series of elimination contests will then be conducted by the company ultimately leading to the selection of Food Fair's Checker of the Year.

Ballot boxes in the shape of huge cash registers have been set up in each store to hold the expected 500,000 votes that will be cast.

In announcing Food Fair's participation in the program, Myer B. Marcus, executive vice president, said, "The checkout is one of the key operations in our markets today. We recognize the value and importance of fast, accurate, courteous service at this important customer contact point. That is why we welcome this opportunity to have our shoppers help select our outstanding checkout personnel."

Food Fair's Checker of the Year will compete in the state finals preliminary to selection of 10 regional representatives who will attend the Super Market Institute Convention in May when the international checker will be crowned.

D'Avella (Continued From Page 1)

"... when the form of government of any municipality shall be changed, the officers and employees or persons in the ... unclassified service of any subdivision of the government of this state where the civil service laws are operating shall be continued in service and all rights enjoyed as to pensions, terms of service and salaries shall continue without standing such ... change of form of government."

The in v.v.w of the holding of the New Jersey Superior Court (App. Div.) Beirne v. Gangemi, and the statutes, the Registrar of Vital Statistics was in the unclassified Civil Service in accordance with rule 7 (2) (T), and that his term did not end on July 1, 1962, the effective date of the Council-Manager Plan D in Belleville, but that the office of Registrar of Vital Statistics remained in full force and effect pursuant to Section 207 of the (Faulkner Act) and R. S. 11:28-2 of the Civil Service Act.

I therefore conclude that Mr. Ralph Risoli was legally appointed Registrar of Vital Statistics for a period of three (3) years by Commissioner N. R. Pico, and that the appointment was duly approved by F. Merton Saybolt, State Registrar, and by the provisions of section 207 (Faulkner Act) and R. S. 11:28-2. Mr. Ralph Risoli is in fact the legally constituted Registrar of Vital Statistics of the Town of Belleville, New Jersey.

Very truly yours,  
THOMAS C. D'AVELLA  
Town Attorney

SUBROGATE'S NOTICE

ESTATE OF ANDREA P. KATZ, a minor. NOTICE OF SETTLEMENT. Notice is hereby given that the accounts of the executor, Garfield D. Katz, of the estate of ANDREA P. KATZ, a minor, will be audited and stated by the Surrogate and reported for settlement to the Essex County Court, Probate Division on Tuesday the 19th day of FEBRUARY next.

Dated December 31, 1962  
AARON NAROL, Attorney  
Commerce Street  
Newark 2, N.J.  
147, 24, 31-Feb. 7, 14  
Fee \$25.00

SUBROGATE'S NOTICE

Dated: December 19, 1962  
ESTATE OF CARTER CHESTERFIELD SAUNDERS, deceased.  
Notice is hereby given that the accounts of the executor, Garfield D. Katz, of the estate of ANDREA P. KATZ, a minor, will be audited and stated by the Surrogate and reported for settlement to the Essex County Court, Probate Division on Tuesday the 19th day of FEBRUARY next.

Dated December 31, 1962  
AARON NAROL, Attorney  
Commerce Street  
Newark 2, N.J.  
147, 24, 31-Feb. 7, 14  
Fee \$25.00

LEGAL NOTICE

STATE OF NEW JERSEY  
Department of State  
Office of Disposition  
To all to whom these presents may come: Greeting.  
WHEREAS, it appears to my satisfaction, by duly authenticated record of the voluntary dissolution thereof by the unanimous consent of all the stockholders, deposited in my office, that KIDDE MACHINERY CORPORATION a corporation of this State, whose principal office is situated at No. 25 Farrand Street, in the Town of Bloomfield County of Essex State of New Jersey (D. W. Mac) being the agent therein and in charge thereof, upon whom process may be served, has complied with the requirements of Title 14, Corporations, General of Revised Statutes of New Jersey, preliminary to the issuing of this Certificate of Dissolution.

NOW, THEREFORE, I, the Secretary of State of the State of New Jersey, do hereby certify that the said corporation did, on the Thirty-first day of December, 1962, in my office a duly executed by all the stockholders there of, which said consent and the record of proceedings aforesaid are now on file in my said office as provided by law.

In Testimony Whereof, I have hereunto set my hand and affixed my official seal, at Trenton, this Thirty-first day of December, 1962.

Fee: \$25.00

LEGAL NOTICE

STATE OF NEW JERSEY  
Department of State  
Office of Disposition  
To all to whom these presents may come: Greeting.  
WHEREAS, it appears to my satisfaction, by duly authenticated record of the voluntary dissolution thereof by the unanimous consent of all the stockholders, deposited in my office, that KIDDE MACHINERY CORPORATION a corporation of this State, whose principal office is situated at No. 25 Farrand Street, in the Town of Bloomfield County of Essex State of New Jersey (D. W. Mac) being the agent therein and in charge thereof, upon whom process may be served, has complied with the requirements of Title 14, Corporations, General of Revised Statutes of New Jersey, preliminary to the issuing of this Certificate of Dissolution.

NOW, THEREFORE, I, the Secretary of State of the State of New Jersey, do hereby certify that the said corporation did, on the Thirty-first day of December, 1962, in my office a duly executed by all the stockholders there of, which said consent and the record of proceedings aforesaid are now on file in my said office as provided by law.

In Testimony Whereof, I have hereunto set my hand and affixed my official seal, at Trenton, this Thirty-first day of December, 1962.

Fee: \$25.00

LEGAL NOTICE	
Charter No. 12013	Reserve District No. 2
REPORT OF CONDITION OF THE PEOPLES NATIONAL BANK & TRUST COMPANY OF BELLEVILLE, IN THE STATE OF NEW JERSEY, AT THE CLOSE OF BUSINESS ON DECEMBER 31, 1962, IN RESPONSE TO A CALL MADE BY COMPTROLLER OF THE CURRENCY, UNDER SECTION 52 C. & REVISED STATUTES.	
ASSETS	
Cash, balances with other banks, and cash items in process of collection (Net of any reserves)	3,063,869.23
United States Government obligations, direct (and guaranteed) (Net of any reserves)	8,513,668.72
Obligations of States and political subdivision (Net of any reserves)	2,420,725.06
Corporate stocks (including \$7,500.00 stock of Federal Reserve Bank) (Net of any reserves)	37,500.00
Loans (Net of any reserves) (including \$2,500.00 over-drafts) (Net of any reserves)	9,012,436.07
Bank premises owned and fixtures \$13,577.29 (Bank premises owned are subject to Note Item 10, "Other Assets")	110,794.39
Other assets	60,472.51
TOTAL ASSETS	23,239,306.41
LIABILITIES	
Demand deposits of individuals, partnerships, and corporations	8,683,393.71
Time and savings deposits of individuals, partnerships, and corporations	10,298,188.80
Deposits of United States Government (including postal savings)	264,494.73
Deposits of States and political subdivisions and Certified and officers' (Bank premises owned are subject to Note Item 10, "Other Assets")	1,407,033.32
TOTAL DEPOSITS	20,253,110.56
(a) Total demand deposits	8,683,393.71
(b) Total time and savings deposits	10,469,436.85
Other liabilities	885,612.67
TOTAL LIABILITIES	21,710,946.33
CAPITAL ACCOUNTS	
Capital Stock:	
(a) Common stock, total par \$2,000,000	130,806.00
(b) Preferred stock, total par \$80,000.00, callable at \$100.00 per share	1,320,000.00
Undivided profits	132,881.71
Reserves (retained earnings) (preferred stock)	128,000.00
TOTAL CAPITAL ACCOUNTS	1,520,687.71
TOTAL LIABILITIES AND CAPITAL ACCOUNTS	23,239,306.41
MEMORANDUM	
Assets pledged or assigned to secure liabilities and for other purposes	
1,015,000.00	
I, Frank J. Bolen, Cashier, of the above-named bank, do hereby declare that this report of condition is true and correct to the best of my knowledge and belief.	
FRANK J. BOLEN	
B. THOMAS ATTKEN	
RAY D. POST	
Directors	
No. 97	

They say.... "8 out of 10 homes have a cold room." Is yours one of the 8????

Warm up that hard-to-heat room with the new

**CHILL CHASER**

BY IRON FIREMAN

THIS REVOLUTIONARY NEW DEVELOPMENT IN ADD-ON HEATING keeps your cold or chilly room warm and cozy, with filtered, circulating, thermostatically controlled heat.

LOW COST HEAT. The Chill Chaser room heater is simple and inexpensive to install—and economical to operate; up to 75% less than other add-on heaters. Ideal for use with existing warm air or hot water systems. Heat source is your domestic hot water heater tank or central boiler.

EASILY AND QUICKLY INSTALLED. Put controlled heat where you need it in hard-to-heat or unheated bathroom, enclosed porch, bedroom, basement recreation room, attic room—or anywhere low-cost, dependable supplemental heat is needed.

FREE HOME DEMONSTRATION. See the Chill Chaser now, before winter comes. We will gladly demonstrate an actual unit in your home, without cost or obligation. See it operate. Feel the gentle circulating warmth. Write or phone now for free folder and demonstration.

**B & R PLUMBING AND HEATING**

203 FRANKLIN AVENUE BELLEVILLE, N. J. PL 9-7356

SOLE DISTRIBUTORS & INSTALLERS IN BELLEVILLE

Check these advantages!

- ✓ Circulates filtered warm air.
- ✓ Heat comes from hot water tank or boiler.
- ✓ Individual automatic thermostat.
- ✓ Safe—no flames, vents or high temperature elements.
- ✓ Economical both to install and operate.

NOT THE PLACE FOR COLD CASH

The place to keep your money is in a savings account at Peoples National Bank. Your money is safe from fire, theft or loss, and it does earn interest.

Protect your cash . . . make it work for you . . . keep it in a Peoples National savings account.

PEOPLES NATIONAL BANK AND TRUST COMPANY

237 WASHINGTON AVENUE

BELLEVILLE, NEW JERSEY

Member Federal Deposit Insurance Corporation  
Member Federal Reserve System



## VIEW FROM THE SIDELINES

By RAY FERSKO

The Bellboys added another win last Friday as they routed Nutley 37-28. The game was bad, for both teams had no ball control.

Nutley had the least, so they lost.

The Bellboys did well on defense and really worked hard to gain possession, but as soon as they got the ball they lost it, so all their hard work was in vain.

On offense the team was giving the ball away as they showed the opposition every move. If it hadn't been for the strategic third period defense, Belleville would have been low man on the totem pole.

As usual the foul situation was poor, and this is against all good concept of defense. On offense the main problem was the lack of patience and the imbalance of the players. Too often there were men coming out of their zone, which made it hard for quarterback Lilioia to set up any patterns.

The defensive back control improved greatly as Steve Fox and Bob Byers contributed most of the rebounds. The offensive boards were also good, but too often the players did not follow up their shots.

The greatest improvement was made from the line as 13 out of 17 free throws were completed for a 76.5 average. This is in sharp contrast to last Tuesday's 18 for 31 against Bloomfield. A good game was played by Freshman Ron Tomaszewski, who came in for Lilioia in the fourth quarter. Although he lacks experience now, he should be of great benefit to Belleville in the coming year.

Tomorrow (Friday) the East Orange Panthers stalk to Belleville. During the football season, Belleville suffered its only defeat at the hands of East Orange, so the eagles will have to exert all they have against the Panthers. East Orange is big and are presently leading the Big Ten.

A win against East Orange would be big for Belleville. The Panthers will be tough competition all the way. With a few breaks the Blue and Gold can get into the game, but they'll have to be a lot tougher on defense and not force many shots on offense. One factor in their favor is that they will be playing on their home court and this may trouble the East Orange sharpshooters, who are more accustomed to their large home court. At any rate, it's going to be a rough game and the Bellboys better be a lot more aggressive than they have been, for East Orange will show them no mercy.

Congratulations to the Belleville Girls' Precision Drill Team for their outstanding performance during half-time at the Belleville-Nutley game.

## Kohler's Loses Three Games To McGreevy's

McGreevy's Tavern won all three games from Kohler's Sheet Metal Co. in the Friday Night Ladies Bowling League. Marge Dikeboom of McGreevy's rolled her highest series to date, with games of 166-200 218 to live her a 582 series.

S. W. Brown, Mortician won all three games from Bay's Drug and Gallagher's Tavern took all three games from Belleville Lumber. Marge O'Neil of GT helped her team along with games of 174-162-173 for a 509 series. La Nor's Beauty Salon lost two games to the Lounge.

**TEAM WON**  
McGreevy's Tavern 32  
S. W. Brown, Mortician 30  
Gallagher's Tavern 30  
The Lounge 30  
La Nor's Beauty Salon 28  
Belleville Lumber 23  
Bay's Drug 23  
Kohler's 21

**INDIVIDUALS AVE.**  
M. Dikeboom 165  
P. Narucki 160  
M. O'Neil 155  
M. Gorham 151

## J.V.'s SUFFER 34-33 SQUEAKER TO NUTLEY

The J.V.'s lost 34-33 in the last few seconds of a very tight game with Nutley. As in the Varsity game, Nutley took a 6-5 lead in the first quarter, scoring 2 of the 6 on four shots.

Belleville, led by Len Luongo, Frank Ray, Walter Fibs and Ron Tomaszewski, scored 5 points to Nutley's 5 in the second period, thus, at the half, the score was 11-10.

Nutley, led by tough rebounder Lenny Sherman, scored 12 to Belleville's third period 11 and then finally won the game with 11 more in the last period.

## FRESHMEN CONTINUE WINNING

Led by Rich Luongo and Ed Gutknecht, the freshmen dealt Nutley a 49-33 loss. The game was Belleville's right from the start as Loungos scored 8 points in the first quarter and the Nutley team hit for 7. This winning streak lasted for the remainder of the game with Gutknecht and Luongo doing the scoring. The way the freshmen are shaping up, they may very well continue winning for the rest of the season.

## WRESTLING TO RESUME

The wrestling team resumes its season with 7 more meets in the next three weeks. Starting next Thursday, there will be up-to-the-minute coverage in The Belleville Times-News.

150 Mary Seiler of S. Gosh Truck  
149 Ing. 152, Marie Gorham of Mic-  
146 key's Cycle, 151, Dorothea  
145 Croom of Mattia Offel, 151;  
139 Virginia Cietone of Mattia Offel, 151.

The standings of the teams are as follows:

	W	L
McKay's Cycle	32	18
Galley	32	19
Pinarre	30	21
Porcella Jewellers	28 1/2	23 1/2
Garry's Coffures	28	23
Olympic Bowl	27 1/2	23 1/2
Matia Offel	27	24
Lanarone	27	24
Anonymous Four	26	24
Lisante	26 1/2	24 1/2
Johnnie's Service	26	25
Galaxy	25 1/2	25 1/2
S. Gosh Trucking	25	26
La Nor's	24	27
Milassius	22 1/2	28 1/2
Ross Wood Work	22 1/2	28 1/2
The Vikings	22	29
C. DeSantis	19 1/2	31 1/2
Rondreck	18 1/2	32 1/2
Broadhurst	15	33

## Orechio Again Takes Lead In Olympic League

The Carl Orchio Agency bowling team took all three games from the A & F Auto in the Olympics Bowling League, thus recapturing their first place spot.

Costa's Deli took two games from Belleville Travel. White Oak again beat the Barbones Chevrolet two games. Nutley Sun won two from Rose Reilly Agency.

	W	L
Carl Orchio Agency	30 1/2	21 1/2
Costa's Deli	32	22
White Oak Pharmacy	31	23
Barbone's Chevrolet	27	27
Rose Reilly Agency	26	28
Belleville Travel	25 1/2	28 1/2
A & F Auto	24	30
Nutley Sun	18	36

## HAVE A CAREER NOT JUST A JOB!

**Learn shorthand**  
**PERMANENT HIGH SALARY**  
World famous Kres Method prepares you for a rewarding full or part time career. Training hours to suit your schedule. Age no barrier. Send for Free booklet "K" today! Mysel Inc. P-2110.  
Care Attention, Director

**KREE INSTITUTE**  
FREE LITERATURE

## Customers

(Continued From Page 1)

A series of elimination contests will then be conducted by the company ultimately leading to the selection of Food Fair's Checker of the Year.

Ballot boxes in the shape of huge cash registers have been set up in each store to hold the expected 500,000 votes that will be cast.

In announcing Food Fair's participation in the program, Myer B. Marcus, executive vice president, said, "The checker is one of the key persons in our markets today. We recognize the value and importance of fast, accurate, courteous service at this important customer contact point. That is why we welcome this opportunity to have our shoppers help select our outstanding checker personnel."

Food Fair's Checker of the Year will compete in the state finals preliminary to selection of 10 regional representatives who will attend the Super Market Institute Convention in May where the international checker will be crowned.

## D'Avella

(Continued From Page 1)

"... when the form of government of any municipality shall be changed, the officers and employees or persons in the ... unclassified service of any subdivision of the government ... of this state where the civil service laws are operating shall be continued in service and all rights enjoyed as to pensions, terms of service and salaries shall continue notwithstanding such ... change of form of government."

The law of the holding of the New Jersey Superior Court (App. Div.) Belme v. Gangemi, and the statutes, the Registrar of Vital Statistics was in the unclassified Civil Service in accordance with rule 7 (2) (T), and that his term did not end on July 1, 1962, the effective date of the Council-Manager Plan D in Belleville, but that the office of Registrar of Vital Statistics remained in full force and effect pursuant to Section 207 of the (Faulkner Act) and R. S. 11:282 of the Civil Service act.

I therefore conclude that Mr. Ralph Risoli was legally appointed Registrar of Vital Statistics for a period of three (3) years by Commissioner N. R. Pico, and that the appointment was duly approved by E. Merton Saybolt, State Registrar, and by the provisions of section 207 (Faulkner Act) and R. S. 11:282-2, Mr. Ralph Risoli is in fact the legally constituted Registrar of Vital Statistics of the Town of Belleville, New Jersey.

Very truly yours,  
THOMAS C. D'AVELLA  
Town Attorney

## SUBROGATE'S NOTICE

ESTATE OF ANDREA P. PACK, a minor.  
**NOTICE OF SUBROGATION**  
Notice is hereby given (as the executor of the estate of ANDREA P. PACK, a minor, will be advised and stated by the Subrogate and reported for settlement to the Essex County Probate Division on Tuesday, the 19th day of FEBRUARY next, Dated December 31, 1962.  
AARON NAROL, Attorney  
11 Commerce Street  
Newark 2, N. J.  
12-24-19-27-7, 14 No. 95  
Fee \$20.00

## SUBROGATE'S NOTICE

ESTATE OF CARL HESTERFIELD SAUNDERS, deceased.  
Notice is hereby given (as the executor of the estate of CARL HESTERFIELD SAUNDERS, deceased, has been advised and stated by the Subrogate and reported for settlement to the Essex County Probate Division on Tuesday, the 19th day of FEBRUARY next, Dated December 31, 1962.  
AARON NAROL, Attorney  
11 Commerce Street  
Newark 2, N. J.  
12-24-19-27-7, 14 No. 95  
Fee \$20.00

## LEGAL NOTICE

STATE OF NEW JERSEY  
Department of State  
Certificate of Dissolution  
To all to whom these presents may come: Greeting, Whereas, it appears to my satisfaction, by duly authenticated report of the voluntary dissolution thereof by the unanimous consent of all the stockholders, dissolved in my office, the KREWE MACHINE CORPORATION a corporation of this State, whose principal office is situated at No. 25 Farrant Street, in the Town of Bloomfield County of Essex State of New Jersey (D. W. Mack being the agent therein and charged therewith, who process may be served), has complied with the requirements of Title 14, Corporation, General, of Revised Statutes of New Jersey, preliminary to the issuing of this Certificate of Dissolution.

NOW THEREFORE, I, the Secretary of State of the State of New Jersey, do hereby certify that the said corporation did, on the Thirtieth day of December, 1962, file in my office a duly executed and attested copy of the Certificate of Dissolution, and that the said corporation, as of the date of the filing of the said Certificate of Dissolution, has ceased to exist as a corporation under the laws of the State of New Jersey. In Testimony Whereof, I have hereunto set my hand and affixed my official seal, at Trenton, this Thirtieth day of December, A.D. one thousand nine hundred and sixty-two.  
FRANK J. BOLEN, Secretary of State  
RAY D. POST, Director

of December A.D. one thousand nine hundred and sixty-two.  
ROBERT J. BURKHARDT, Secretary of State  
Jan. 10, 1963  
Fee: \$34.95

## LEGAL NOTICE

Chapter No. 122019  
Reserve District No. 2  
REPORT ON THE STATUS OF THE PEOPLES NATIONAL BANK & TRUST COMPANY OF BELLEVILLE, IN THE STATE OF NEW JERSEY, AT THE CLOSE OF BUSINESS ON DECEMBER 31, 1962. PUBLISHED IN RESPONSE TO CALL MADE BY COMPTROLLER OF THE CURRENCY, UNDER SECTION 3211, U. S. REVISED STATUTES.

**ASSETS**  
Cash, balances with other banks, and cash items in process of collection \$2,083,809.29  
United States Government obligations, direct and guaranteed (Net of any reserves) 8,513,096.72  
Obligations of States and political subdivisions (Net of any reserves) 2,430,725.06  
Corporate stocks (including \$22,000,000 of Federal Reserve Bank of New York) (Net of any reserves) 37,000.00  
Loans and discounts (including \$2,500,000 overdrafts) (Net of any reserves) 9,012,836.07  
Bank premises owned (Bank premises owned are subject to liens in favor of secured creditors) 116,794.39  
Other assets 66,472.51  
**TOTAL ASSETS** 23,238,206.44

**LIABILITIES**  
Demand deposits of individuals, partnerships, and corporations 8,633,357.71  
Time and savings deposits of individuals, partnerships, and corporations 10,296,189.69  
Deposits of United States Government (including postal savings) 264,664.73  
Deposits of States and political subdivisions 1,407,033.33  
Obligations and officers' checks, etc. 172,531.41  
**TOTAL LIABILITIES** 20,773,836.94

## CAPITAL ACCOUNTS

Capital Stock, total \$1,000,000.00  
Preferred stock, total par \$250,000.00, callable at \$100,000.00  
Surplus 1,338,000.00  
Undivided profits 122,261.71  
Reserves and retirement account for preferred stock 128,000.00  
**TOTAL CAPITAL ACCOUNTS** 1,528,261.71

## TOTAL LIABILITIES AND CAPITAL ACCOUNTS

23,238,206.44

## MEMORANDUM

Assets pledged or assigned to secure liabilities and for other purposes 1,616,000.00  
I, Frank J. Bolen, Cashier, of the above-named bank do hereby declare that this report of condition is true and correct to the best of my knowledge and belief.  
FRANK J. BOLEN, Cashier  
RAY D. POST, Director

## Seven-Game Lead Is Held By Parrillo's

In the Wednesday Afternoon Ladies Bowling League, which is held at the Olympic Bowl, Parrillo's team won two games to give them a 7-game lead on the second place team, Gerard Hairdresser.

Roman Furniture took three games from Nat & Dotty's Luncheonette. It puts them in 3rd place. By winning two games from Gerard Hairdresser, Branch Brook Manor Cleaner slipped into 4th place.

Capital Cab won two games from Binky's Hi Balls. All the other teams won one game each. Parrillo's stands in first place for high team single game. They rolled a 514.

Yvonne Cloutier from Parrillo's was the high bowler for the day, she had a 447 series.

	W	L
Parrillo's	37 1/2	16 1/2
Gerard Hairdresser	30 1/2	23 1/2
Roman Furniture	30	24
Branch Brook Club	28	26
Graylock Esso	27 1/2	26 1/2
Miscara Music	27	27
Binky's Hi Balls	25 1/2	28 1/2
Capital Cab	25	29
Nat & Dotty's	21 1/2	32 1/2
Camarrato's Camp	17 1/2	36 1/2

Complete Heating Systems  
For All Your Heating Needs Call  
PLYMOUTH 9-1907  
46 Eugene Pl. Belleville

OUR FUEL OIL MAKES WARM FRIENDS

Now new low cost installation prices.  
Low cost service contract including parts coverage  
Convenient monthly budget plan.

24 hour emergency service.

HILLTOP RIVIERA OIL CO., INC.

They say.... "8 out of 10 homes have a cold room." Is yours one of the 8????

**Warm up that hard-to-heat room**

with the new

# CHILL CHASER

BY IRON FIREMAN



**THIS REVOLUTIONARY NEW DEVELOPMENT IN ADD-ON HEATING keeps your cold or chilly room warm and cozy, with filtered, circulating, thermostatically controlled heat.**

**LOW COST HEAT.** The Chill Chaser room heater is simple and inexpensive to install—and economical to operate; up to 75% less than other add-on heaters. Ideal for use with existing warm air or hot water systems. Heat source is your domestic hot water heater tank or central boiler.

**EASILY AND QUICKLY INSTALLED.** Put controlled heat where you need it in hard-to-heat or unheated bathroom, enclosed porch, bedroom, basement recreation room, attic room or anywhere. Low cost, dependable supplemental heat is needed.

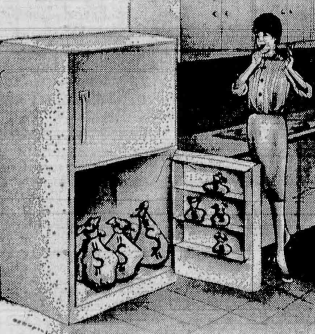
**FREE HOME DEMONSTRATION.** See the Chill Chaser now, before winter comes. We will gladly demonstrate an actual unit in your home, without cost or obligation. See it operate. Feel the gentle circulating warmth. Write or phone now for free folder and demonstration.

**Check these advantages!**

- ✓ Circulates filtered warm air.
- ✓ Heat comes from hot water tank or boiler.
- ✓ Individual automatic thermostat.
- ✓ Safe—no flames, vents or high temperature elements.
- ✓ Economical both to install and operate.

**B & R PLUMBING and HEATING**  
203 FRANKLIN AVENUE  
BELLEVILLE, N. J.  
PL 9-7356  
SOLE DISTRIBUTORS & INSTALLERS IN BELLEVILLE

# NOT THE PLACE FOR COLD CASH




The place to keep your money is in a savings account at Peoples National Bank. Your money is safe from fire, theft or loss, and it does earn interest.

Protect your cash... make it work for you... keep it in a Peoples National savings account.

## PEOPLES NATIONAL BANK AND TRUST COMPANY

237 WASHINGTON AVENUE



Member Federal Deposit Insurance Corporation  
Member Federal Reserve System



# COMPARE LOWEST PRICES ALL-WAYS!



## VOTE

**FOR YOUR FAVORITE CHECKER DURING FOOD FAIR'S "CHECKER OF THE YEAR" CAMPAIGN**

Cast your vote for the checker who provides you with the finest in efficient, fast, friendly service. Your favorite checker can win a two-week vacation in Hawaii for two in this nation-wide competition.

**150 EXTRA MERCHANTS GREEN STAMPS**  
REDEEM 50 STAMP COUPON WITH PURCHASE OF \$5.00 OR MORE  
REDEEM 100 STAMP COUPON WITH PURCHASE OF \$10.00 OR MORE  
Redeem Both Coupons With Purchase Of \$15.00 Or More

**50 M Merchants GREEN STAMPS**  
FREE EXTRA  
**MERCHANTS GREEN STAMPS**  
WITH THIS COUPON AND PURCHASE OF \$5.00 OR MORE  
Except Cigarettes, Fresh Milk, Cream or Fair Trade Items  
Adults Only—One Coupon Per Family  
IN ADDITION TO THE STAMPS YOU RECEIVE WITH YOUR PURCHASE.  
VOID AFTER JAN. 19th

**100 M Merchants GREEN STAMPS**  
FREE EXTRA  
**MERCHANTS GREEN STAMPS**  
WITH THIS COUPON AND PURCHASE OF \$10.00 OR MORE  
Except Cigarettes, Fresh Milk, Cream or Fair Trade Items  
Adults Only—One Coupon Per Family  
IN ADDITION TO THE STAMPS YOU RECEIVE WITH YOUR PURCHASE.  
VOID AFTER JAN. 19th

**VEGETARIAN OR WITH PORK HEINZ BEANS**  
16 oz. 10¢ SAVE 3¢

**PROGRESSO ITALIAN IMPORTED TOMATOES**  
4 35 oz. \$1.00 SAVE 19¢

Tomato Juice F.F. Deluxe 4 46 oz. \$1.00  
Welchade Grape Drink 3 quart 89¢  
Sunsweet Prune Juice 1 quart 41¢  
Prune Juice Stratford Farms 3 quart \$1.00  
Fre-Mar Fruit Cocktail 3 30 oz. \$1.00

Motts Applesauce 2 15 oz. 36¢  
Tomato Paste Contadina or Hunts 4 6 oz. 49¢  
Tomato Sauce Del Monte or Hunts 10 8 oz. 99¢  
Niblets Corn 2 12 oz. 36¢  
Star-Kist Tuna Chunk Light 3 6 1/2 oz. 85¢

**DOLE JUICES**  
PINEAPPLE PINEAPPLE-ORANGE PINEAPPLE-GRAPEFRUIT FRESH FROZEN 6 6 oz. \$1.00

Mott's A.M. or P.M. 3 quart 93¢  
Del Monte Peas or Green Giant 5 17 oz. \$1.00  
Log Cabin Syrup 12 oz. 29¢  
Progresso Olive Oil 24 oz. 57¢  
Knorr Soup Chicken Noodle 1 quart \$1.09  
3 30 oz. 36¢

Tomato Soup Heinz or Campbell's 4 10 1/2 oz. 43¢  
La Rosa Spaghetti No. 8 or 9 2 16 oz. 43¢  
Sunmaid Raisins Seedless 2 15 oz. 55¢  
Crisco Shortening 3 lb. 85¢  
Fyne-Bake Shortening 3 lb. 65¢

**ROYAL—ALL FLAVORS GELATINS**  
4 3 oz. 25¢ SAVE 12¢

**RED HEART—BEEF OR LIVER DOG FOOD**  
6 16 oz. 79¢ SAVE 6¢

Wesson Oil 48 oz. 79¢  
Flour Gold Medal—Pillsbury—Hackers 5 lb. 54¢  
Pancake Mix Aunt Jemima 1 lb. 21¢  
Evaporated Milk Fyne Taste 8 tall 1.00  
Cocoa Marsh 22 oz. 55¢  
Nestle Eveready Cocoa 1 lb. 53¢  
Instant Coffee Maxwell House 6 oz. 95¢  
Yuban Instant Coffee 2 oz. 45¢  
Holland House Coffee 1 lb. 59¢

Wheatena 22 oz. 39¢  
Cheerios 15 oz. 39¢  
Kraft Grape Jelly 3 10 oz. \$1.00  
Post Alphabits 8 oz. 29¢  
Kraft Mayonnaise 1 quart 69¢  
Miracle Whip Salad Dressing 1 jar 35¢  
Guldens Mustard 2 8 1/2 oz. 29¢  
Gaines Gravy Train 5 lb. 71¢  
Chiffon Liquid Detergent 22 oz. 49¢

**PSG BRAND TOP QUALITY & U.S. CHOICE**  
**LEGS OF LAMB**  
OVEN READY 55¢  
Regular Style 49¢

Shoulder Lamb Chops 1 lb. 69¢  
Loin Lamb Chops 1 lb. 99¢  
Rib Veal Chops 1 lb. 79¢  
Rib Lamb Chops 1 lb. 89¢  
Shoulder Veal Chops 1 lb. 69¢  
Loin Veal Chops 1 lb. 89¢

**VEAL ROAST** LEGS or RUMP 49¢

Shoulder Veal Roast 1 lb. 45¢  
Young Turkeys 8 to 10 lb. Average 1 lb. 49¢  
Polish Sausage Hygrade 1 lb. 69¢  
Swift Canned Ham 4 tin \$3.59  
Potato Salad 1 cup 29¢

**PSG Brand Top Quality & U.S. Choice**  
**RIB STEAKS**  
1 lb. 79¢

Green Beans Fyne Taste—Cut 7 16 oz. \$1.00  
Sweet Peas Fyne Taste 7 16 oz. \$1.00  
Sliced Beets Fre Mar—Small 7 16 oz. \$1.00  
Sliced Carrots Fre Mar—Small 7 16 oz. \$1.00  
Purina Dog Chow 5 lb. 71¢  
Beacon Wax 1 quart 89¢  
Fyne Tex Soap Pads 5 boxes \$1.00  
Mr. Clean Liquid Cleaner 15 oz. 37¢  
Dazzle Bleach 1 gallon 55¢  
Joy Liquid Detergent 22 oz. 61¢  
Guest Ivory Soap 4 bars 23¢  
Fab or Cheer Detergent large pkg. 31¢  
Lipton Tea Bags 100 pkgs. \$1.17

**GOOD LUCK BRAND MARGARINE**  
4 1 lb. \$1.00

**BY THE PIECE LIVERWURST**  
1 lb. 39¢

Romano Cheese Domestic 1 lb. 85¢  
Cheese Spread Pasturized Processed 2 lb. 69¢  
Cream Cheese Mayfair 2 3 oz. 21¢  
Cheese Slices Mayfair, Past. Process 3 8 oz. 31¢  
Canadian Smelts Large No. 1 1 lb. 29¢  
Red Salmon Steak Sliced 1 lb. 85¢

Sharp Cheese Country Fair 1 lb. 69¢  
Cottage Cheese Mayfair 1 lb. 25¢  
Muenster Slices Mayfair 1 lb. 59¢  
Shrimp Cocktail Ready to Serve 3 4 oz. 89¢  
Whittings Fresh Caught 1 lb. 29¢  
Striped Bass Fresh Caught 1 lb. 49¢

**FLOUNDER FILLET** 69¢  
Fresh Boneless & Skinless

Golden Delicious Apples 10 oz. 19¢  
Fresh Spinach 20 oz. 35¢  
Broccoli Rabe (Rapini) 1 lb. 29¢  
Baking Potatoes U.S. No. 1 Russet A Size 4 lb. 35¢

**CALIFORNIA NAVAL ORANGES**  
10 in bag 49¢



Tercentenary Tales

# The 'Howling Wilderness' Mystery Road

By JOHN T. CUNNINGHAM

Mystery and isolation still lie heavily on Pahaquarry Township, least settled of all New Jersey municipalities. Rare is the visitor, particularly when winter closes its icy grip, and only 63 people claimed Pahaquarry as their home in the 1960 Census.

Pahaquarry nestles in a long strip between the Kittatinny Mountains and the Delaware River in Warren County. Northward through Sussex County a narrow road winds casually along the river bank to Port Jervis. Then the road turns sharply across country northeastward to Kingston, N.Y., on the Hudson River, 70 miles north of New York City. Even today a journey from Pahaquarry to New York, via Port Jervis and Kingston, would provoke comment—yet more than 200 years ago Dutch adventurers hacked a road through a "howling wilderness" from Kingston (then Esopus) to reach Pahaquarry.

The lure was the copper ore that enticed sandstone in the hills of Pahaquarry. Indians brought copper, or at least word of copper, to Esopus in about 1650. Through the river valleys from Esopus went the Dutchmen, following old Indian trails or hewing their own way. Here, for the picking, was the wealth that had brought them to a new world!

These Dutchmen attacked the formidable rock of the Kittatinny Mountains. They dug well and they dug often, opening a seven-foot-high tunnel to a length of nearly 100 feet into the mountain, and then exploring from this at right angles for another 30 feet on either side. They sank at least two other inclined shafts to depths of 40 to 60 feet.

All of this, mind you, in the 1650's—some 10 years before the English controlled New Jersey, some 25 years before Philadelphia was founded. Every foot of stone was removed by hand and every pound of copper was extracted by raw manpower.

But copper in Pahaquarry and copper in Holland were two vastly different things. By the banks of the Delaware, the ore was so much stone in the market-places beside Holland's canals it was easy to trade for gold.

Up the valley toward Esopus went the ore-burdened Dutch, widening and leveling their road as they went. Their "mine road" by 1650 stretched open and clear the full 164 miles from Pahaquarry to Esopus.

Some questions will always remain concerning the copper digging, but there is undeniable evidence that the mountains were mined extensively before New Amsterdam fell to the English in 1664. The mine openings remain, and records dated as early as 1728 tell of the mining, even then being enveloped by mystery and time.

The Dutch miners kept their ore secrets to themselves; for records indicate that they took their copper to Holland in 1659 without telling Governor Peter Stuyvesant. Directors of the Dutch West India Company promptly wrote Stuyvesant in some anguish. They had interviewed one Claes de Ruyter, as "a person, who showed that he was not ignorant of it," and suggested that the governor investigate.

Stuyvesant investigated and learned only that there was in some vague area along the South (Delaware) River, but knowledge of the mining was vague.

Meanwhile between 1659 and 1664 the mine road from Esopus to Pahaquarry grew ever more useful. Undoubtedly this was the first major improved road of any length in North America; the road, not the copper, would prove to be the lasting contribution of those first Dutchmen who ventured into the "howling wilderness."

Down that road came English settlers in the early 18th century. Down that road in December, 1776, came General Horatio Gates on his way from Saratoga with reinforcements for Washington's beleaguered army beside the Delaware. Later, President John Adams used the road as a fine shortcut between his Massachusetts home and Philadelphia.

## Rec. Bulletin Board

### THURSDAY

9:15 a.m. — Preschool Play Program — Recreation House.  
1:00 p.m. — Housewives Bowling Leagues — Olympic Bowl.  
3:30 p.m. — Jr. Barbell Club — Stadium.  
7:00 p.m. — Sr. Barbell Club — Stadium.  
7:00 p.m. — Boys Club — Friendly House.  
7:30 p.m. — Senior Basketball Leagues — High School Boys Gym — Bruins vs. Prieto's Team; Aiello's Team vs. Chets; Charges vs. Porsavages; Dolphins vs. Bombers.

### FRIDAY

9:15 a.m. — Preschool Play Program — Recreation House.  
3:30 p.m. — Jr. Barbell Club — Stadium.  
7:00 p.m. — Sr. Barbell Club — Stadium.  
7:00 p.m. Jr. Rifle Club, Stadium.

### SATURDAY

9:00 a.m. — Recreation Kiwanis Girls & Boys Bowling League Olympic Lanes & Branch Brook Lanes.  
9:00 a.m. — Jr. Basketball Leagues — High School Gyms: Belleville No. 1's vs. Cubs; Steers vs. Bakers; Speedsters vs. Persch's Team.  
9:30 a.m. — Elementary Basketball Clinic — High School Gym.

### MONDAY

1:30 p.m. — Monday Afternoon Sewing Club — Recreation House.  
3:30 p.m. — Jr. Barbell Club — Stadium.  
7:00 p.m. — Sr. Barbell Club — Stadium.

7:00 p.m. — Girls Fencing, High School Gym.  
7:00 p.m. Women's Bowling Leagues — Branch Brook Lanes.  
7:00 p.m. — Girls Gym Program — High School Gym.

7:00 p.m. — Girls Gym Program — Friendly House.  
7:00 p.m. — Chess Club — Recreation House.

9:00 p.m. — Men's Bowling League — Branch Brook Lanes.

### TUESDAY

3:30 p.m. — Jr. Barbell Club — Stadium.

7:00 p.m. — Sr. Barbell Club — Stadium.  
7:00 p.m. — Boys Club — Friendly House.

7:00 p.m. — Boys Jr. Rifle Club — Stadium.  
7:00 p.m. — Men's Bowling League — Branch Brook Lanes.  
8:00 p.m. — Draggin Dragons — Recreation House.

### WEDNESDAY

3:30 p.m. — Jr. Barbell Club — Stadium.

7:00 p.m. — Sr. Barbell Club — Stadium.  
7:00 p.m. — Boys Club — Friendly House.

7:00 p.m. — Recreation Basketball Leagues — Intermediate — High School Gyms: Hustlers vs. Buckeyes; Branch Brook vs. Rod Runners; Silver Lake vs. Harry's Team; Bellevilles vs. Never-Nevers; Turks vs. Sharp Shooters; Jesters vs. Raiders; Lappers vs. Jetsons.

Today both road and the Dutch mines remain, plus several other holes dug in the 19th and early 20th centuries by Johnny-combatly copper hunters. The copper is still there, too, but is never likely to prove commercial, although geologists won't say so flatly.

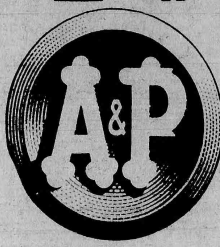
So Pahaquarry settles back in the mystery of three centuries. Its 63 steady residents are not much more than the number of Dutchmen there in 1660; there must have been many diggers then, for a 100-foot-deep tunnel is not a matter for few hands, even ambitious Dutch hands.

Pahaquarry knows of Philadelphia, of course, and there is a road to (and from) New York. Nevertheless, when visitors come, they seek mainly to renew contacts with 300 and more years ago—and they come to travel "The Old Mine Road" northward through the beauty of the Warren and Sussex mountainland.

Copyright 1962 — State of New Jersey Tercentenary Commission.

SMART GIFT SEEKERS SAVE PLAID STAMPS! AND HERE'S GOOD NEWS FOR...

# BUDGET KEEPERS



COME SEE... YOU'LL SAVE AT A&P!

100 PLAID STAMPS

**100 Extra Plaid Stamps**  
With The Purchase of  
**\$7.50 or More**

Redeemable at A&P Stores Giving Plaid Stamps.  
Coupon Expires Sat., Jan. 19th, 1963  
Limit One Coupon Per Adult Customer  
Tobacco Products, Fresh Milk and Alcoholic Beverages exempt from Plaid Stamp offer.

**100 Extra Plaid Stamps**  
With this Coupon and Purchase of  
**Breck Shampoo 1.00**

Redeemable at A&P stores giving Plaid Stamps.  
Coupon Expires Sat., Jan. 19th, 1963  
Limit one per Adult Customer  
Tobacco Products, Fresh Milk and Alcoholic Beverages exempt from Plaid Stamp offer.

**50 Extra Plaid Stamps**  
With this Coupon and Purchase of  
**Ketchup 3 73¢**

Redeemable at A&P stores giving Plaid Stamps.  
Coupon Expires Sat., Jan. 19th, 1963  
Limit one per Adult Customer  
Tobacco Products, Fresh Milk and Alcoholic Beverages exempt from Plaid Stamp offer.

**50 Extra Plaid Stamps**  
With this Coupon and Purchase of  
**Tomato Soup 5 89¢**

Redeemable at A&P stores giving Plaid Stamps.  
Coupon Expires Sat., Jan. 19th, 1963  
Limit one per Adult Customer  
Tobacco Products, Fresh Milk and Alcoholic Beverages exempt from Plaid Stamp offer.

**50 Extra Plaid Stamps**  
With this Coupon and Purchase of  
**York Apples 4 49¢**

Redeemable at A&P Stores Giving Plaid Stamps  
Coupon Expires Sat., Jan. 19th, 1963  
Limit one per Adult Customer  
Tobacco Products, Fresh Milk and Alcoholic Beverages exempt from Plaid Stamp offer.

**50 Extra Plaid Stamps**  
With this Coupon and Purchase of  
**Yolk Apples 4 49¢**

Redeemable at A&P Stores Giving Plaid Stamps  
Coupon Expires Sat., Jan. 19th, 1963  
Limit one per Adult Customer  
Tobacco Products, Fresh Milk and Alcoholic Beverages exempt from Plaid Stamp offer.



"Super-Right" Quality **FULLY COOKED**  
**SMOKED HAM**

Whole or Either Half—Full Cut <b>49¢ lb.</b>	25 Extra Plaid Stamps with Shank Portion <b>29¢ lb.</b>	25 Extra Plaid Stamps with Butt Portion <b>39¢ lb.</b>
---	--	---

100 Extra Plaid Stamps with purchase of WHOLE HAM... 50 Extra with HALF HAM

**CHICKENS** **LARGE ROASTING** **39¢ lb.**  
Fresh Top Grade—4 to 5 lbs.

<b>SHOULDER VEAL ROAST</b> Boneless <b>69¢ lb.</b>	<b>LEG or RUMP of VEAL</b> <b>49¢ lb.</b>
<b>BRISKET BEEF</b> 99¢ <b>79¢ lb.</b>	<b>STEWING VEAL</b> Boneless <b>59¢ lb.</b>
<b>HAM STEAKS</b> SMOKED <b>89¢ lb.</b>	<b>BREAST of VEAL</b> <b>29¢ lb.</b>
<b>BEEF LIVER</b> Specially Selected <b>39¢ lb.</b>	<b>CODFISH STEAKS</b> Fresh <b>39¢ lb.</b>
<b>BACON END SLICES</b> 1 lb. pkg. <b>49¢</b>	<b>WHITE SHRIMP</b> Fancy Medium <b>98¢ lb.</b>
	25 Extra Plaid Stamps with purchase of <b>ITALIAN SAUSAGE</b> HOT or SWEET <b>79¢ lb.</b>

**BIG Del Monte SALE!**  
Here's a good chance to stock your pantry with Del Monte Quality Foods!

<b>JUICE DRINK</b> <b>2 51¢</b> 1 quart 14 fluid oz. cans	<b>PINEAPPLE - GRAPEFRUIT</b> <b>2 65¢</b> 1 lb. 14 oz. cans
<b>STEWED TOMATOES</b> Del Monte <b>3 65¢</b> 1 lb. cans	<b>DEL MONTE SPINACH</b> <b>2 33¢</b> 15 oz. cans
<b>DEL MONTE CARROTS</b> Diced <b>2 41¢</b> 1 lb. jars	<b>DEL MONTE Sliced BEETS</b> <b>2 21¢</b> 1 lb. jars
<b>ASPARAGUS</b> Mary Washington <b>2 65¢</b> 10 1/2 oz. cans	<b>DEL MONTE PEAS</b> Early Garden <b>2 39¢</b> 1 lb. cans
<b>DEL MONTE CORN</b> Golden Whole Kernel <b>2 39¢</b> 12 oz. cans	<b>DEL MONTE CORN</b> Golden Cream Style <b>2 41¢</b> 1 lb. 1 oz. cans

**More Grocery Buys!** **Dairy Favorites!** **Frozen Foods!**

<b>Sunshine KRISPY CRACKERS</b> 1 lb. box <b>29¢</b>	<b>Imported Italian ROMANO CHEESE</b> lb. <b>69¢</b>	<b>Chun King Brand CHOW MEIN</b> Shrimp or Chicken <b>1 lb. 49¢</b>
<b>Nabisco—Cream Sandwich OREO COOKIES</b> 1 lb. pkg. <b>45¢</b>	<b>Imported DANISH BLUE CHEESE</b> lb. <b>85¢</b>	<b>BANQUET DINNERS</b> 11 oz. pkg. <b>39¢</b>
<b>Coconut Chocolate Drop KEEBLER CRACKERS</b> 1 lb. pkg. <b>49¢</b>	<b>Pinnacle Brand—Pecan COTTAGE CHEESE</b> 2 lb. pkg. <b>45¢</b>	<b>A&amp;P Brand GREEN PEAS</b> 3 10 oz. cans <b>49¢</b>
<b>Chicken of the Sea WHITE TUNA</b> Solid Pack <b>7 oz. can 39¢</b>	<b>Kraft's Cracker Barrel SHARP CHeddar</b> 10 oz. bar <b>55¢</b>	<b>A&amp;P Brand—Regular or French GREEN BEANS</b> 5 9 oz. pgs. <b>89¢</b>
<b>Westchester Brand CHICKEN BROTH</b> 12 1/2 oz. cans <b>31¢</b>	<b>Fancy Domestic—Sliced or Piced PROVOLONE CHEESE</b> lb. <b>61¢</b>	<b>A&amp;P Brand LIMA BEANS</b> Baby <b>5 10 oz. pgs.</b> <b>89¢</b>
<b>Strongheart DOG FOOD</b> For Cats and Puppies, too! 1 lb. can <b>10¢</b>	<b>Victory Brand—Pasteurized CREAM CHEESE</b> 8 oz. pkg. <b>27¢</b>	<b>Cap'n John's OYSTER STEW</b> 2 10 oz. cans <b>59¢</b>

**Jane Parker—Special This Week!** **Regularly Priced at 86¢—Bottle of 24**

**Pineapple or Peach Pie 59¢**

**25 Cinnamon Buns** Get 25 Extra Plaid Stamps with purchase of Jane Parker... **39¢**

**50 DRY MILK SOLIDS** Get 50 Extra Plaid Stamps with purchase of White House Brand—Non-Fat Milk... **89¢**

**50 3 PIECE BOWL SET** Get 50 Extra Plaid Stamps with purchase of Dura—White... **89¢**

**25 SPRAY STARCH** Get 25 Extra Plaid Stamps with purchase of Bright Sail Instant... **39¢**

**Dristan Tablets** Special This Week **77¢**

**Fresh Fruits and Vegetables!**

<b>Iceberg Lettuce</b> Firm, Crisp large head <b>19¢</b>	<b>Anjou Pears</b> Fine for Winter Salads 2 lb. 29¢
<b>Grapefruit</b> Indian River Seedless—Medium Size 2 for 29¢	<b>Fresh Broccoli</b> Young, Tender bunch 29¢
<b>Navel Oranges</b> Calif. Seedless Large Size 8 for 49¢	

<b>Spry</b> Pure Vegetable Shortening 8 oz. off label 79¢ 2 lb. can	<b>Underwood Deviled Ham</b> 2 1/4 lb. 21¢ 4 1/2 lb. 39¢	<b>Ronzoni SPAGHETTI No. 8 or SPAGHETTINI No. 9</b> 2 1 lb. 45¢	<b>Glorox Laundry Bleach</b> 1/2 gal. 37¢ 1 gallon 61¢	<b>Rinso Blue</b> For the family wash 10 oz. off label 67¢ 3 lb. 7 oz. pkg. 67¢	<b>Alpo Dog Food</b> Beef 14 1/2 oz. can 27¢
<b>Wisk Liquid Detergent</b> Liquid pint 39¢ Liquid quart 73¢	<b>Swan Liquid Detergent</b> 1 pint 4 lb. oz. plastic 62¢	<b>Lux Liquid Detergent</b> Liquid quart 87¢	<b>All Detergent</b> Controlled sudsing 3 lb. 1 77¢	<b>Fluffy All</b> Controlled Suds 3 lb. 77¢	<b>Vim Detergent</b> New Detergent in Tablets For automatic washers 2 lb. 8 oz. pkg. 71¢

Prices effective through Sat., Jan. 19 in Super Markets and Self-Service stores only. All Tobacco Products, Fresh Milk and Alcoholic Beverages exempt from Plaid Stamp Offer.



# SOCIAL AND CLUB NEWS OF COMMUNITY INTEREST

## Newly Formed Jaycee-ettes Install First Officers At Dinner Meeting



Mrs. John Mattson (second from left), New Jersey Jaycee-ette President, administers oath of office to Mrs. Frederick G. Devlin, president of Belleville Jaycee-ettes. Next to her

are Mrs. Robert Licker, vice-president and state delegate, and Mrs. Bernard E. O'Connor, secretary. Mrs. Alan H. Bernstein (at extreme left) is secretary.

The newly formed Belleville Jaycee-ettes recently installed their officers at an Installation Dinner held at the Branch Brook Manor Restaurant.

Sworn in as Jaycee-ette president was Mrs. Frederick G. De-

vin of 96 Passaic Avenue. Mrs. Robert Licker of 84 Branch Brook Drive is the new vice-president and state delegate. Mrs. Bernard E. O'Connor of 203 Franklin Avenue is secretary, and Mrs. John Mattson, president of the state Jaycee-ette organization, presided at the official recognition of the Belleville Chapter and at the installation of the officers.

In addition to Mrs. Mattson, Jerome U. Burke, state Jaycee president, and Alan Bernstein, Belleville Jaycee president, addressed the group, which was made up of Jaycees, Jaycee-ettes and guests.

Burke's speech centered on the civic responsibility of Jaycee wives and the effectiveness of both organizations. He stated that

## Engaged



JOAN S. FELLMAN

Mr. and Mrs. Harry G. Fellman of 745 Scotland Road, Orange, formerly of Belleville, announce the engagement of their daughter, Joan Sula, to David Arthur Zimmer, son of Mr. and Mrs. Emanuel Zimmer of Fairfield, Conn.

Miss Fellman, a graduate of Belleville High School, is a sophomore in the School of Social Science at Simmons College in Boston, Mass. She is a member of the staff of "The Simmons News."

Mr. Zimmer expects to graduate in June from the University of Connecticut in Storrs, Conn., with a major in accounting. He is central treasurer of the Associated Student Government and chairman of the Tau Mu chapter of Tau Epsilon Phi fraternity. Upon graduating, Mr. Zimmer will be commissioned to the rank of second lieutenant in the U. S. Army Reserve.

A June wedding is planned.

## 'Package Party' Aids Charities

"Package Party" sponsored by Court Gracia 751, Catholic Daughters of America, will be held Monday evening, January 21, at 8:30 o'clock in the Knights of Columbus Hall, Nutley.

Each guest and member is requested to bring a package ranging in price from fifty cents to auctioned off for the benefit of

one dollar. The packages will be various charities supported by the C.D.A. organization.

Mrs. Malcolm Condon and Mrs. Wilbur Furlong are co-chairmen of the staff of "The Simmons News."

## Rabbi Will Lecture On Jerusalem Windows

Rabbi Abraham Soltes of Temple Shalom, East Orange, will give a side lecture on the world-famous Chagall Windows of Jerusalem at the Belleville-Nutley Chapter of Hadassah meeting to be held Tuesday, January 22, scheduled for 8:45 p.m., in meetings will be held at Congregation Ahavath Achim, 125 Academy Street, Nutley.

Mrs. Mitchell Friedman is program vice-president, and Mrs. Ben Kur will preside at the meeting.

## Stork Club

James Philip Salmon

A second child, James Philip, was born December 14 in Clara Maass Memorial Hospital to Mr. and Mrs. James Salmon of 444 Washington Avenue. The seven pound, ten ounce young-

ster joins Sharon Ann, age 19 months. Mrs. Salmon is the former Colleen M. Murphy, daughter of Mrs. James C. Murphy of 12 Division Avenue, and the late Mr. Murphy. The paternal grandfather is a commercial artist with incorporated ideas Advertising Agency, Mountainside.

## Glenn Michael Rossi

Mr. and Mrs. Michael Rossi of 41 Sanford Avenue are receiving congratulations on the arrival of their first child, a son, Glenn Michael, born December 15 in Clara Maass Memorial Hospital. His birth weight was five pounds, 15 ounces. Mrs. Rossi is the daughter of Mr. and Mrs. Michael Pennell of 41 Sanford Avenue. Mr. Rossi, son of Mrs. Michael Rossi of 20 Lake Street, is employed by Galsworthy, Inc., Newark.

## David John Pereles

Mr. and Mrs. John M. Pereles of 263 Bloomfield Avenue, Nutley, are receiving congratulations on the arrival of their first child, a son, David John, born December 27 in Clara Maass Memorial Hospital. His birth weight was five pounds, five ounces. Mrs.

PERELES is the former Rita Liddy, daughter of Mrs. John Liddy of 4 Bell Street, and the late Mr. Liddy. Mr. Pereles, son of Mr. and Mrs. John Pereles of 206 Flood Street, is a commercial artist with incorporated ideas Advertising Agency, Mountainside.

Thur. Fri. Sat. Jan. 17-18-19, also Monday, Tues., Jan. 21-22. Shelley Waters - Jane Fonda. Elfron Zimbalist Jr. - Claire Bloom.

'The Chapman Report' Plus "Panic In The Year Zero"

Saturday Matinee Jan. 19 1 pm All Day Sunday, Jan. 20 (Cont. Perform.) "The Huns" "The Centurian"

## ELWOOD CASUALS

Belleville, N. J.

Semi Annual Clearance Sale

'The Greatest Ever!' 20 to 50% Off On

Sportswear  
Knitwear  
Handbags  
Sport & Dress Coats  
Car Coats  
Jewelry  
Casual Dresses  
Cocktail Dresses etc.

"Exclusive, But Never Expensive"

## ELWOOD CASUALS

193 Washington Ave. Belleville, N. J.

## January SALE

NOW IN PROGRESS

20% to 50%  
REDUCTIONS

Girdles, Bras Corsettes,  
Robes, Sleepwear, Loungewear

*Lady Fair*

LINGERIE CORSETRY

Expert Fittings — Free Alterations

510 Franklin Ave. NO 7-6000 Nutley  
Franklin Theatre Building

Open Weekdays 10 to 6 Mon. & Fri. 'til 9

This is  
a bill



Pay bills with a  
personal loan from

**FIDELITY**  
UNION TRUST COMPANY

Member Federal Deposit Insurance Corporation

**'FRANKLIN'**  
Nutley • NO 7-0100

NOW PLAYING Thru Tues!

ROBERT SHIRLEY  
MICHAEL MELANE  
TWO FOR THE SPESAW

Also

Don Murray - Chris Kaufman  
"ESCAPE FROM  
EAST BERLIN"

BIG SAT. MATINEE SHOW!  
"WONDERS OF  
ALADDIN"  
"TARZAN'S GREAT  
ADVENTURE"

## SPECIAL

Fri., Sat., Sun.  
Only

THE FINEST  
IMPORTED  
BOILED HAM  
1.29 per lb.  
Reg. 1.98 per lb.

Featuring Every Fri.

Fried Fillet  
Fan Tail Shrimp  
Clam Chowder  
Fish Cakes  
Baked Macaroni

"A GOOD TIME BEGINS WITH GOOD FOOD"

Try Our  
Delicious  
HOME  
MADE  
FROZEN  
FOODS

SALISBURY STEAK  
SWISS STEAK  
CHICKEN & SHRIMP  
CHOW MEIN  
PEPPER STEAK  
STUFFED CABBAGE  
MEAT BALLS in gravy  
SPAGHETTI SAUCE  
FROZEN SOUPS  
MANY MORE

**TOWNE DELICATESSEN**  
AND BAKERY

650 Joralemon St. cor. Franklin, Belleville  
PL 9-9870

Free Parking on Premises

**Jamaica**  
in Style...

**MARRAKESH BEACH HOTEL**  
OCHO RIOS • JAMAICA

Harry N. Snow Genl. Mgr.

The Marrakesh Hotel  
is  
JAMAICA'S FINEST

See your Travel Agent  
or contact our New York  
Office: Phone —  
Judson 2-3780

## PAUL'S SHOE SHOP MID-WINTER SALE

## STRIDE - RITE SHOES

DISCONTINUED STYLES



20% to 40%  
REDUCTION

FLORSHEIM  
MEN'S SHOES  
Selected Styles

\$16.80 - \$18.80

HIGH GRADE MEN'S AND BOYS' SHOES  
BATES - LUCEY - GERBERICH  
AND OTHER FINE SHOES

Reduced 20% to 40%

## PAUL'S SHOE SHOPS

570 Bloomfield Avenue  
Bloomfield Center

153 Washington Avenue  
Belleville Center

Doctor's Prescriptions Accurately Filled



# High School News

## Spotlight Editors Are Announced

By JACQUELINE FOSTE

Spotlight, Belleville High's newspaper, has announced its official editors for this year. The new editorial staff, consisting of nine persons, is headed by Susan Hoch as editor-in-chief. Backing her as associate editor is Marlene James and as business manager is John Peslak. The other editorial positions are occupied by Judy Underwood, news editor; Toni Hendrickson, feature editor; Lynn Joiner, exchange editor; Ray Morrison, sports editor; David Wolf as photographic editor; Christine Edwards as art editor.

Sue Hoch has served on the Spotlight staff for the past three years. In addition Susan has been active on the Magazine Committee, Honor Society and is the President of Belleville-Nutley-Bloomfield chapter of Junior Iliad. Besides her writing and organizing abilities Susan was on the Monard Art staff in her junior year. Musically inclined, this active senior has been a member in good standing in both the Dance Band and Baker's Dancers.

An active member of the Spotlight staff since her freshman year, Marlene James has also been editor of the Student Handbook, which was distributed this year for the first time in recent years. She is also editor-in-chief of the school page of The Belleville Times and is a member of the Monard literary staff. Marlene has also taken an active interest in the girls intramurals and Official's club and has served on the Student Council.

Able carrying out the duties of business manager is John Peslak. John has received much experience in this field, serving as chairman of this year's magazine committee. In addition to his other activities he is president of the Physics Club, vice-president of the Math club and a member of the Track club. His keen interest in sports is further illustrated by the fact that he has played baseball and was captain of the J.V. baseball team.

Guidance and help in the composing of this paper comes un-

der the duty of Mr. Joseph Pelzman. Besides teaching English 2 and 3, Mr. Pelzman is advisor to both the Spotlight and school page of The Belleville Times. While attending Upsala College he was editor of both the college newspaper and the literary magazine Poet. Mr. Pelzman's literary achievements have won him a national medal in journalism.

All of these people contributed to the making of our last Spotlight, the third last year, published on December 21, 1962. This issue, was new and striking from its ne wbaner, designed by Bonnie Cook, to a series of new articles and features.

This recent Spotlight presented news, features and a review of the victorious football season. This issue announced the editorial positions of the 1963 Monard staff, consisting of Mary Lillio, editor-in-chief, Judy Tremel and Cathie Jensen, assistant editors; and Claire Tortorella, art editor.

The news feature entitled "Double Trouble Around B.H.S." was a comical review of all the identical twins in the school. This along with the "Inquiring Reporter" and the newly revised "Heard in the Hall" brought forth a chuckle from everyone. Keeping students in touch with the activities of various clubs is a column entitled Club News.

Spotlight has added two new series to its list of "Seniors on the Way Up" and "What Students Are Reading Now." The former represents three seniors chosen for their academic records and promising achievements. The latter, on the style of a book review acquaints readers with books enjoyed by teenagers and college students throughout the nation. The first of a series of three articles by widely traveled seniors was also started in this issue.

An insight on the trials and joys of college life was presented by Belleville's 1962 Valedictorian, Miss Barbara Underwood. "B.H.S. speaks," a revealing survey based on serious topics, was also included.

The feature article, "So This is Chivalry," a satire on the manners and chivalry present in B.H.S., proved to be an entertaining piece of reading because the incidents seemed to be so very similar to those experienced every day.

Two editorials, one with the initial idea of giving varsity letters for high marks and the other, on the theory of continuing our Christmas spirit throughout the year, brought forth many candid reactions. Spotlights in this issue were the new members of the B.H.S. Faculty. This article served as an introduction to the new teachers.

Sports also found its place in the newspaper. There were articles on the up and coming wrestling team and a preview of what was to come in our baseball season. Our victorious football season was also reviewed along with a special article on the teams senior members.

## Voice Of BHS

By MARIA CORINO

If you could change or improve Mid-term week how would you do it?

JUDY TREMEL: "Each department should give its exam on a designated day, so you can come into school for your exams periods."

BONNIE COOK: "Only come in for exams and no other classes, so you are able to study better."

LOIS GRUHN: "Mid-terms

should be given every other day with designated days for certain subjects. This way the students will be more relaxed, enabling them to receive better marks since they will be responsible for only one mid-term a day."

KATHY BAILEY: "Schedule the exams so that they will not be given on the same day. If you have one day, that's enough to study for the night before. Two or three a day are too much to study for and you may get confused while taking the test and your grades will drop."

DIANE RYAN: "Instead of having mid-terms, devise an exam system where we could have quarterly exams. This way less material would be covered but more emphasis could be put on the work."

## Key Club Is Organized

By JANET BORING

The Key Club, a newly organized boys' club, held its first meeting in the Belleville High School Cafeteria January 9. The temporary officers of the club are Phil Rinaldi, president; Arthur Assantes, vice president; Allen Berg, secretary; Jack Swearing, treasurer.

A guest speaker, Glenn Hart, who is Head District Governor of Key Club spoke about the activities of the other Key Clubs in the U. S. He spoke to the boys about the trip they might take in April to attend the National Key Club Convention in Atlantic City.

The Key Club is a branch of the Kiwanis Club. The main purpose of this club is to serve the community in such ways as finding jobs for boys and girls, being tutors for pupils who have been absent, and doing other worthwhile jobs.

The adult supervisors of the club are Mr. Cook, Mr. Knuppke, and Mr. Rosamilla.

The members of this club are chosen on the basis of intelligence, activities in and out of school, and willingness to work.

## ARC RADIO

136 Washington Ave.  
Belleville

Known For Honest  
Service

Over A Decade

Call PL 1-0073  
For Service Within  
ONE HOUR

TV - Radio - Stereo  
Color TV

Do-It-Yourself Center  
40% OFF ON TUBES

Complete Stock of:

Tubes - Antennas - Cartridges  
Needles - Transistor Radios  
Parts

New! Television —  
Appliance Sales  
Center

Do You  
Have A  
HEARING  
PROBLEM  
?

Delay can be harmful. Hear  
again with tiny Maico Hearing  
Aids. Concealed in bow  
of glasses, behind ear, or in  
hair. Write For FREE Booklet  
or stop in.

**MAICO**

1031 BROAD STREET  
NEWARK

MA 3-3167

Personal Service of  
Monroe J. Greenwald  
Certified Hearing Aid  
Audiotologist

## It Happens

By LAURA BAKER

JANUARY 18  
Belleville High's ninth basketball game will begin at 7 p.m.

The varsity and junior varsity teams will vie against East Orange's strong team. The game will take place at the East Orange High School Gym.

JANUARY 19  
Belleville High's newly formed Wrestling Team, under the coaches, Mr. Stanley Scher and Mr. Peter Spera, will compete with

the Essex Catholic Wrestling Team. The match will take place at 8 p.m. at the Essex Catholic School on Broadway in Newark.

JANUARY 22  
The Junior Varsity Basketball Team under the coaching of Mr. Charles Leavers will begin to play at 7 p.m. The varsity game will begin shortly after. The opponent this evening will be Irvington High. The games will be played at Irvington.

The Irvington and Belleville Wrestling Teams will enter into competition at 4 p.m. Our successful team will wrestle in the Belleville Gym. The team hopes to see a large crowd to encourage its efforts.

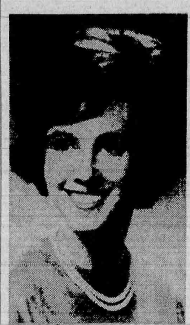
JANUARY 25  
The Columbia and Belleville Basketball Teams will compete for another win at the Bell's own gym. The game will begin at the usual time, 7 p.m.

The administrators hope to see both good sportsmanship and another large crowd.

Belleville High's Wrestling Team will have its sixth match on Friday immediately after school at 3:45. West Orange will play at 4:00. The lighter classes, starting with 95 pounds, will compete first and wind up with the heavyweight class, 185 pounds or over.

## Physicians Of The Future Forge Ahead

By MARLENE JAMES



MIRIAM POST

"I feel that career clubs are helpful in high school because

own home. He'll lie about other things, too."

DINNER SCHEDULED  
Belleville Masonic Temple at Jerusalem Street will hold its annual roast beef dinner January 17 from 7:30 to 7 p.m. under the sponsorship of the Belleville Chapter Order of Eastern Star.

Chairman of the affair is Mrs. Edythe Woodman.

Chairman of the affair is Mrs. Edythe Woodman.

Chairman of the affair is Mrs. Edythe Woodman.

Chairman of the affair is Mrs. Edythe Woodman.

Chairman of the affair is Mrs. Edythe Woodman.

Chairman of the affair is Mrs. Edythe Woodman.

Chairman of the affair is Mrs. Edythe Woodman.

Chairman of the affair is Mrs. Edythe Woodman.

Chairman of the affair is Mrs. Edythe Woodman.

Chairman of the affair is Mrs. Edythe Woodman.

Chairman of the affair is Mrs. Edythe Woodman.

Chairman of the affair is Mrs. Edythe Woodman.

Chairman of the affair is Mrs. Edythe Woodman.

Chairman of the affair is Mrs. Edythe Woodman.

Chairman of the affair is Mrs. Edythe Woodman.

Chairman of the affair is Mrs. Edythe Woodman.

Chairman of the affair is Mrs. Edythe Woodman.

Chairman of the affair is Mrs. Edythe Woodman.

Chairman of the affair is Mrs. Edythe Woodman.

Chairman of the affair is Mrs. Edythe Woodman.

Chairman of the affair is Mrs. Edythe Woodman.

Chairman of the affair is Mrs. Edythe Woodman.

Chairman of the affair is Mrs. Edythe Woodman.

Chairman of the affair is Mrs. Edythe Woodman.

## Student Council Active

By MARLENE JAMES

Want a soda after school? Do you have to make a private phone call? Girls, do you wish your were now mirrors in the girls' room? Thanks to the active Student Council, many of these wishes are, or soon will be, realities.

There is now a soda machine in the alcove to the boys gym and thirty students are invited to use it after school. It cannot be used during the school day because Belleville High participates in the federal lunch program and soda cannot be sold under this plan.

The new phone booth in the hall by the gym's gym balcony is a welcome and attractive addition to the school facilities.

Of course, the paper and pencil machines in the senior halls next to the chemistry lab are, by now, familiar and convenient sights to the B.H.S. student body.

New mirrors have been purchased and will soon be put up in the girls' room.

Besides all of this automation, the student council has been busy with many other activities. A committee has been making plans and starting to work on revising the Student Council constitution. Student Council funds have been used to subsidize the

price paid by students when buses were taken to football games. The student council is looking far ahead to when its funds will be used to give the Student Council Scholarships and the George Lees Scholarship to deserving students of the senior class.

Students of B.H.S., your student council is busy working for you so you get busy and back it. Use the machines they have put in, go to your representative with your ideas. This organization is only as strong as the whole student body makes it.

WE GOODED!

We would like to correct a statement in the Dec. 20 "A Random" column. This article stated that Belleville's football team won the Group IV Section II championship. This was a common misconception but the truth is that we did not win.

ADULT EDUCATION

Adult education is more popular today than ever, according to an article in January's Good Housekeeping magazine. Millions of Americans are taking courses for pleasure, improvement and profit in subjects that range from puppetry to political science, cartooning to criminology.

### WE WATCH THEM GROW UP

Babies are of great importance to us. Even before birth, mothers get from us the vitamin and calcium additives their physicians prescribe. Our baby department stocks all the better health aids needed for baby's comfort and better health.

When you have any usual or emergency need for your children, please depend on us to do everything possible. From a simple to a prescription, we'll be a "mother's helper."

**YOUR DOCTOR CAN PHONE US** when you need a medicine. Pick up your prescription if shopping early, or we will deliver promptly without extra charge. A great many people entrust us with their prescriptions. May we compound yours?

### ABBOTTS DRUG STORE

531 Washington Avenue Belleville, N.J.  
Reliable Prescriptions  
PL 9-8181

### THE LARGEST MULTIPLE LISTING SYSTEM IN BLOOMFIELD - GLEN RIDGE - NUTLEY AND BELLEVILLE

IS THE REALTOR'S SYSTEM

With 48 Agencies To Assure You The Widest Coverage Possible, It Will Pay You To Deal With A Realtor. For Information Call

**PI 3-5114**

### "WATCHDOG" OIL HEAT SERVICE

"Includes easy Budget Payment Plan!"

Spread your heating bills over many months. No interest!—No service charge!

**JOHN HAWKINS AND SON**  
Established in 1892  
198 PARK AVENUE NUTLEY, N. J.  
Your Family's Comfort Is Our Business

### ARC RADIO

136 Washington Ave.  
Belleville

Known For Honest Service

Over A Decade

Call PL 1-0073  
For Service Within ONE HOUR

TV - Radio - Stereo  
Color TV

Do-It-Yourself Center  
40% OFF ON TUBES

Complete Stock of:

Tubes - Antennas - Cartridges  
Needles - Transistor Radios  
Parts

New! Television —  
Appliance Sales  
Center

### Do You Have A HEARING PROBLEM ?

Delay can be harmful. Hear again with tiny Maico Hearing Aids. Concealed in bow of glasses, behind ear, or in hair. Write For FREE Booklet or stop in.

**MAICO**

1031 BROAD STREET  
NEWARK  
MA 3-3167

Personal Service of  
Monroe J. Greenwald  
Certified Hearing Aid  
Audiotologist

### WHEN DEATH OCCURS CALL

**F. Douglas Wadsworth**

WADSWORTH FUNERAL HOME  
524 Union Avenue  
Plymouth 9-2879

### WILLIAM V. IRVINE & SON

MEMORIAL HOME

For more than fifty years it has been our privilege to render personal service and offer friendly counsel to bereaved families. Our service is performed with reverence and dignity and is always within the means of all.

276 Washington Ave. Belleville, N.J.  
Plymouth 9-1114

William V. Irvine Jr., Director

### KIERNAN

Dignified Funeral Service

AVAILABLE TO ALL REGARDLESS OF FINANCIAL CIRCUMSTANCES

NON-SECTARIAN

KIERNAN FUNERAL HOME  
GEORGE F. KIERNAN  
101 UNION AVE. BELLEVILLE, N.J.  
PLYMOUTH 9-3503

### WILLIAM V. IRVINE & SON

MEMORIAL HOME

For more than fifty years it has been our privilege to render personal service and offer friendly counsel to bereaved families. Our service is performed with reverence and dignity and is always within the means of all.

276 Washington Ave. Belleville, N.J.  
Plymouth 9-1114

William V. Irvine Jr., Director

### If Wide-Track is as hot as Pontiac says, why don't they put it in their Tempest?

They just did.

We can take a hint. When people are as happy with something as Pontiac owners are with Wide-Track, we're willing—nay, eager—to let everybody else in on it. That's why Tempest has Wide-Track of its own this year. It's why you got to choose between a lively 4 and a 32-cu. in. V-8, too. We aim to please—and if we do say so, we're pretty accurate. \*Optional at extra cost.

Now there are two kinds of Wide-Track cars . . . Pontiac and Tempest

SEE YOUR AUTHORIZED PONTIAC DEALER FOR A WIDE CHOICE OF WIDE-TRACKS AND GOOD USED CARS, TOO

### GATTI PONTIAC, INC.

645 WASHINGTON AVENUE BELLEVILLE, N. J.



**Belleville Cab**  
Pl. 2-3000

**Royal Shop-Rite**  
169 Washington Ave.

**Tannen's Shoe Shop**  
141 Washington Ave.

**Muscara Music Co.**  
214 Washington Ave.

**Jannarone's Shell Station**  
243 Washington Ave.

1

2

3

4

5

20

19

18

17

16

15

14

- Alterations**  
14—MARY'S ALTERATION SHOP
- Automobiles**  
11—BELLEVILLE-NUTLEY BUICK  
8—MEAD-FORD
- Bakery**  
7—GOECKELER'S QUALITY BAKERY  
22—ZINICOLA'S BAKERY
- Diner**  
13—STEFANO'S DINER
- Department Stores**  
20—THE BOSTON STORE
- Drugs**  
15—ABBOT'S DRUG STORE
- Foods**  
3—ROYAL SHOP-RITE
- Footwear - Men's - Women's**  
5—TANNEN'S SHOE SHOP
- Music**  
4—MUSCARA MUSIC CO.

- Newspaper**  
16—BELLEVILLE TIMES-NEWS
- Optician**  
9—WILLIAM C. SMITH
- Restaurant**  
17—CHRISTIAN'S RESTAURANT  
6—JOHN'S RESTAURANT
- Savings & Loan Assn.**  
12—DE WITT SAVINGS & LOAN
- Service Stations**  
19—VEE BEE ESSO
- Stationers**  
18—THE CRESCENT PRESS
- Taxi Cab**  
1—BELLEVILLE CAB
- Towing Service**  
2—JANNARONE'S SHELL STATION
- Travel Bureau**  
21—BELLEVILLE TRAVEL SERVICE
- Wallpaper - Paints - Glass**  
10—THE GLASS CO.

14

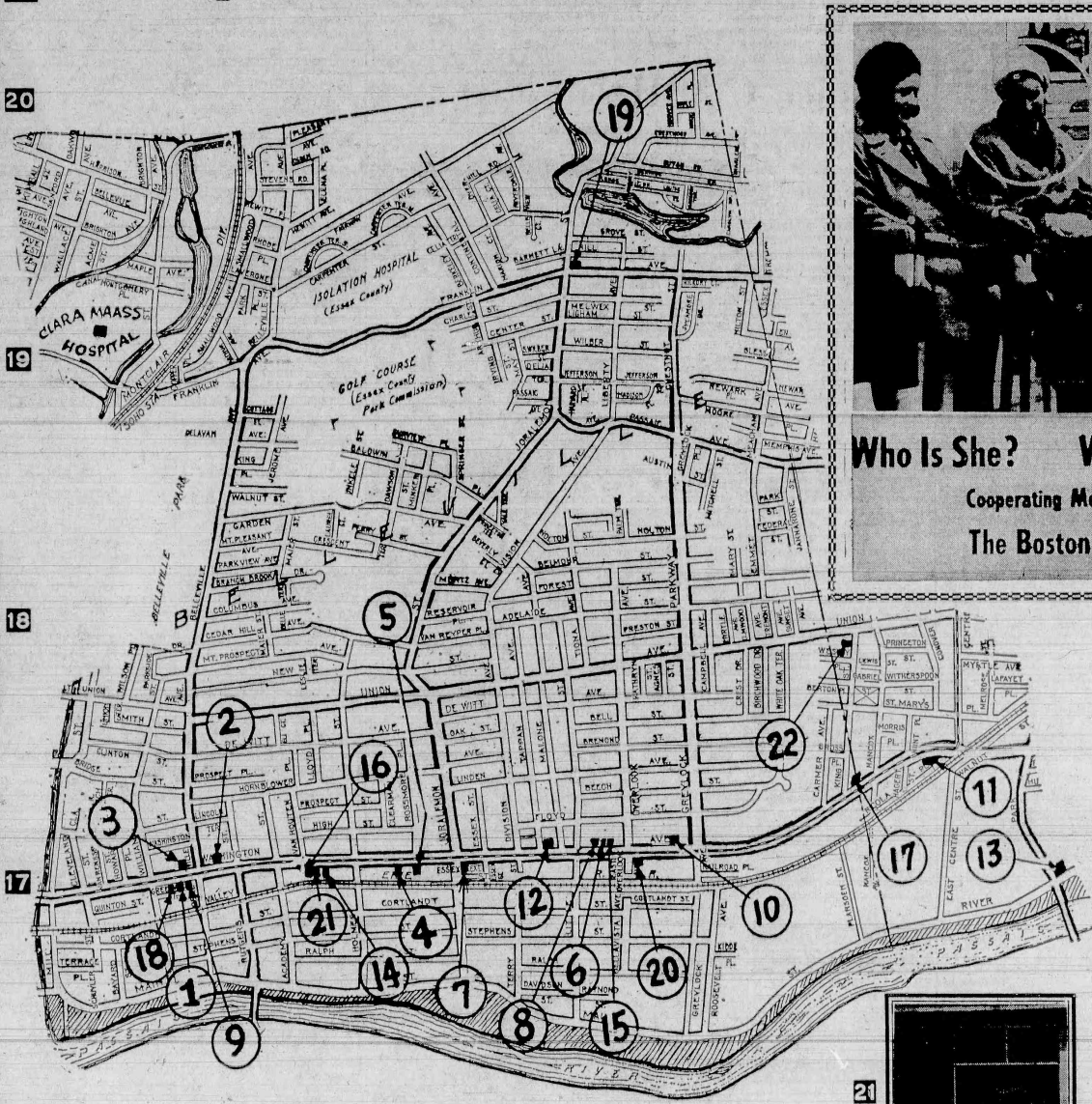
13

12

11

10

9



**Who Is She? Where Is She?**  
Cooperating Merchant:  
**The Boston Store**

6

7

8

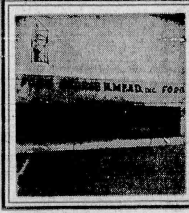
9



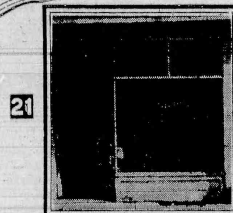
**John's Restaurant**  
529 Washington Ave.



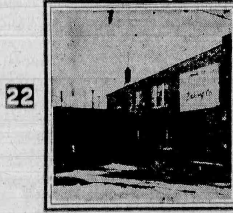
**Goeckeler's Quality Bakery**  
Washington Ave. cor. Joralemon



**Mead-Ford**  
515 Washington Ave.



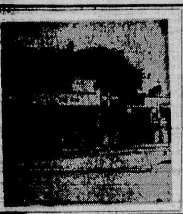
**Belleville Travel Service**  
248 Washington Ave.



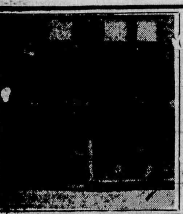
**Zinicola's Bakery**  
King St. nr. Union Ave., Nutley



**The Boston Store**  
538-540 Washington Ave.



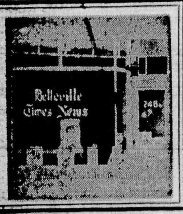
**Vee Bee Esso**  
Franklin Ave. cor. Joralemon



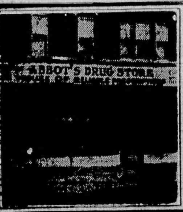
**The Crescent Press**  
126 Washington Ave.



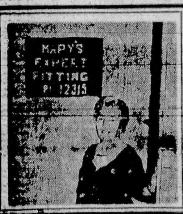
**Christian's Restaurant**  
151 Washington Ave.



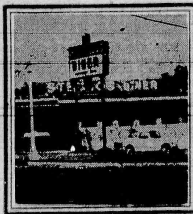
**Belleville Times-News**  
244 Washington Ave.



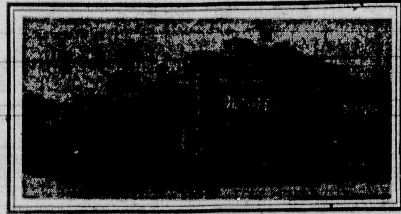
**Abbot's Drug Store**  
251 Washington Ave.



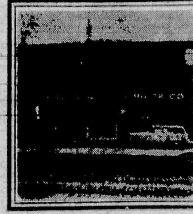
**Mary's Alteration Shop**  
528 Washington Ave.



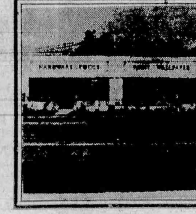
**Stefano's Diner**  
Park Ave. & River Rd., Nutley



**De Witt Savings & Loan**  
485 Washington Ave.



**Belleville-Nutley Bulck**  
86 Washington Ave.



**The Glass Co.**  
535 Washington Ave.



**Wm. C. Smith, Optician**  
140 Washington Ave.



**IF YOU WANT TO...**

**BUY SELL TRADE**

**RENT HIRE HELP**

**CALL PL 9-3200**

**TO PLACE YOUR CLASSIFIED**

**CLASSIFIED ADVERTISING**

Adv. will appear in The Nutley Sun and Belleville Times-News

**Over 56,000 Readers**

**25 WORDS OR LESS** 1.75  
Each Additional Word 8c

**25 WORDS OR LESS THREE TIMES** 4.00  
Each Additional Word 16c

Annual Rate 1.25 Per Week

Ads Must Be In By 12 Noon Monday

**IN MEMORIAM**

Announcement

ATTENTION: For that new look in clothes, call **PLAZA FRENCH CLEANERS**, 250 Centre Street, North 7-2105. Same Day Service. Free Proofmending. 4-23-62 TF

**PERMANENTLY REMOVE UNWANTED HAIR BY ELECTROLYSIS.** Call for complimentary treatment, Miss Berian, 662 Mt. Prospect Avenue, Newark. Buses No. 28 and No. 27 at door. Call Humboldt 4-5005. 11-20-62 TF

**ACCOUNTING**

BOOKKEEPING SERVICES FOR SMALL BUSINESSES, including payrolls, quarterly tax reports. Also income tax reports for individuals. Call North 7-9445 or North 1-1220 anytime. 1-31

**ACCOUNTING SERVICES**

Bookkeeping, taxes, evenings and Saturdays. Call North 7-7054. 1-37

**INCOME TAX** at your business or home. Monthly accounting. Call Edmond 8-7296. Howard J. Chadwick 27 Overlook Terrace, Bloomfield. 4-18

**AGRICULTURE**

**SCREENED TOP SOIL** - FILL, landscaping, etc. Let us solve your drainage problem. Tremble, bulldozer, and truck rentals. Armando Vocaturo - telephone Plymouth 9-6640. 3-6-58 TF

**ALUMINUM SIDING**

**IPERLITO CONSTRUCTION** - Aluminum siding, awnings, and windows. Also stone fronts. Guaranteed work. Free prices. Telephone North 7-7944 for free estimates. 4-6-61 TF

**WE SPECIALIZE** in Aluminum siding, aluminum awnings, wood doors, Jalousies, porch enclosures, Kitchen remodeling and home improvements. A. I. Work Guaranteed. Glen - Field Aluminum Products, Inc., North 7-2428. 7-25-61 TF

**ALUMINUM REPAIRS**

ALUMINUM GLASS and screens repaired; also headquarters for saddles, door closers, window chains, knob sets, grilles, etc. **KING OF BELLEVILLE**, 164 Washington Ave., Belleville, PL 4-1261 TF

**ALL TYPE ALUMINUM REPAIRS** - R.F. LOFF and Alci screening. Work done by qualified glazier mechanics. U.S. All Weather Products Co., 217 Belleville Avenue, Belleville, Plymouth 9-1863. 11-8-62 TF

**ALUMINUM WINDOWS**

**NEW ALUMINUM STORM WINDOWS** specially priced. Nutley Key and Glass 483 Franklin Avenue, Nutley. Call North 7-5405. 2-8-62 TF

**T.K. OAKES** - heavy duty aluminum welded storm windows, rugged - factory to you. Normal sizes \$14.95, including installation. Also gutters, leaders. Paintings. Demonstrations cheerfully given. North 7-2554 before 8:45 a.m. or evenings - 9-15-62 TF

**AUTO SERVICE**

**C.O.L. VISION SPECIALISTS** STRAIGHTENING, PAINTING, lacquer, enamel, lucite, electric welding, chassis work, glass work. A.L.S. RIVERSIDE B O D Y & FENDER WORKS, 221 Valley Street, Belleville, PL 4-1182. 12-17-59 TF

**DECORATORS PAINTERS**

**DOM INNAMORATO** - Painting and Paperhanging. Long experience. Clean, neat work. Estimates given. Pilgrim 3-5154. 12-22-60 TF

**DOES YOUR HOUSE NEED PAINTING?** John Graczyk, General Contractor. Interior and exterior painting. Fully insured. Free Estimates. Telephone NO-7-4469. 7-30-59 TF

**INTERIOR AND EXTERIOR PAINTING** by a reliable contractor. Ceilings painted. Estimates cheerfully given. Call Mr. Whitaker, 880 Franklin Avenue, NO-7-6040. 8-25-60 TF

**PAINTING AND ROOFING** - Gutters, leaders, block ceilings. Quality work. Reasonable prices. 30 years experience. Fully insured. Only the best materials used. Sweeney & Son, Plymouth 9-5855. 2-15-62 TF

**PAINTING AND PAPERHANGING** - inside and outside work. Carpentry, light plaster and cabinet work. All odd jobs. Call North 7-5539. 4-26-62 TF

**IRVING ZUCKER** - PAINTING-DECORATING - Serving Nutley - Since 1939 - NORTH 7-8344. 1-31

**ELECTRICIANS**

**LIVE BETTER ELECTRICALLY** with full horsepower. For free estimate phone Larson's Electric Service, 653 Bell Avenue, Belleville, 24-hour answering service. Plymouth 9-9282. 8-2-57 TF

**CALL US FOR PROMPT AND COMPLETE electrical service** D & E Electric, 39 Ralph Street, Belleville. Telephone Plymouth 1-2782. TF

**BELLO'S ELECTRIC SERVICE** - Complete home wiring. Alterations and repairs. We specialize in 100 Amp. 220 line. North 7-2009. Call anytime for free estimate. 1-14-60 TF

**GEORGE H. HEWITT & SON** - Electrical Contractors. Successors to Harold Kane. North 7-0020 21 Hamilton Pl. 16-15-53 TF

**ELECTRICAL REPAIRS** and wiring at prices you can afford. Phone Plymouth 9-1275. Free estimates. Belleville Electric Repair Service - Ray Donnelly, 11 Prospect Place. 12-20-62 TF

**FLOOR SERVICE**

**FLOORS SANDED, REFINISHED** and waxed. American Floor Sanding Company, Lyndhurst. George Inglis, Gilbert Busch. Telephone Geneva 81827. 2-9-51 TF

**FOR RENT**

**183 PROSPECT STREET**, Nutley - Store, 15'x40'. Good for office or business. Excellent for beautician. Rent \$45. Call North 7-1841. 1-24

**THREE ROOM APARTMENT** - cold water flat. Rent \$30. Nice and clean. Space for parking. Immediate availability. Plymouth 9-5654. 4-19-62 TF

**4 ROOM APARTMENT**, heat, gas & electric supplied. Convenient to transportation. \$100 per month. Call North 7-1870, 84 Oak Ridge Avenue. 1-31

**4 MEDIUM ROOMS**, heat, hot water supplied. \$80. Business couple preferred. Call 5 to 8 P.M. 20 E. Passaic Ave., Nutley. 1-31

**NUTLEY - STORE FOR RENT** on Conover Avenue, with three room apartment in rear. Garage. Available February 1. Call North 7-7835. 1-31

**FIVE ROOM APARTMENT**, heat supplied. \$90. First floor. Call between 5 P.M. and 8 P.M. at 165 Main Street, Belleville. 1-31

**FOR SALE**

**1957 CHRYSLER 2 Door**, H. T. Power Steering & Brakes. Best offer. NO-7-7642 or WE-2-4384. TF

**MATRESSES** - A complete line of name brands, mattresses and box springs. Made to order any size. Remaking. Same day service. Maple Furniture, Custom Mattress Makers, 83 Franklin Avenue, Nutley, North 7-0764. 9 A.M. to 8 P.M. daily-Saturday 9 A.M. to 6 P.M. 5-18-61 TF

**BATHROOM** - Vanities, formica covered; factory show room discounts, buy direct from manufacturer. Perminco Co., 16 Mill St., Belleville, PL 9-1600. 7-20-61 TF

**1954 DODGE RED RAM** V8 ENGINE. Must sell. Also 14 Foot speed boat. Must sell. Call PLV-9-7125. 1-24

**FOR RENT**

**FACTORY FOR RENT**

Nutley Location

Street Level

Approx. 2500 Sq. Feet

AVAILABLE IMMEDIATELY

Phone North 7-4000

**FOR SALE**

**\$3 - Have your roof, gutters, leaders and flashing inspected.** Any small, minor repair included. Aluminum combination windows and doors. General home maintenance. Please call before 8:30 A.M. or after 6 P.M. T. K. Oakes, North 7-2554. 4-58 TF

**WE BUY AND SELL PICTURES** - dishes, clocks, bric-a-brac, used furniture, guns, swords, etc. 333 Main Street, Belleville, Plymouth 9-1148. 6-28-62 TF

**USED DESKS, \$15 & UP.** Filing cabinets, chairs and tables. Edelman Office Furniture Warehouse, 200 Montgomery Street, Paterson, N. J. Lambert 3-6153. 5-26-60 TF

**SALE ON SLIPOVERS**

Upholstery and custom made draperies & piece slip cover, zippers, welting. Expert workmanship. \$89.00. Large selection of dress materials, curtains, trimmings. Visit our store - RIDGE FABRIC CENTER 597 Ridge Road, No. Arlington WY 1-0087. 9-26-61 TF

**TUB ENCLOSURES AND SHOWER DOORS.** Special clearance sale of standard tub enclosures and shower doors. Choice of design. Expert installation. Call for free demonstration. North 7-0283 or North 7-0389. 10-3-61 TF

**LIGHTING SPECIALTIES.** Bargain lighting fixtures, fixture kits, plug-in fixtures. Midgate to 48 inch workshop. Gro-Lux, Growth Units, Fixtures for flower growers. Lamp & fluorescent parts. Shopette, 650 Franklin Ave., North 7-6021. 12-20-62 TF

**ROAST BEEF SUPPER** January 17 from 5:30 P.M. to 7 P.M. Masonic Temple, Jerusalem St., Belleville. Adults \$1.50, Children 75 cents. Sponsored by Belleville Chapter No. 262, OES, Public welcome. 1-17

**NORGE AUTOMATIC WASHER** - good condition. \$65. Bissell carpet sweeper; odds and ends. Moving to apartment. Phone evenings, all day Saturday and Sunday. North 1-1382. 1-24

**CARDS** - boxed general assortment, \$1.90, by Fraxell-Lamont, exclusive with us, English wrapping paper \$3.5 a package, satin ribbon, pastel colors, 1500 in., \$7.95 per bolt. Bridge prizes, wholesale. Filomena's Gifts, 196 Chestnut St., North 7-4491. 1-24-63

**MOVING** - Weibull Gas Range, dishwasher, drop top, 4 P.M., porch, snow pump, fireplace equipment, wrought iron furniture, gardeners, hand mower many others. No 7-0582. 1-24-63

**THUNDERBIRD** - 1958 - 1/2 hard top, power brakes & steering. Excellent condition. Call NO-7-7604. 1-31

**PICTURES** - 11 early American prints. Beautifully framed. \$3.95 to \$39.95. Filomena's Gifts, 196 Chestnut Street, Nutley, North 7-4491. 1-31

**LIVING ROOM FURNITURE** - Modern sofa and two chairs, foam rubber. Excellent condition. Custom made slip covers with draw tape to match. Purchase individually or complete. Reasonably priced. Call North 7-7835. 1-31

**1955 CHEVROLET**, Hydramatic, four door sedan. Good condition. Best offer. Call after 5 P.M. Plymouth 9-0418. 1-31

**ENGLISH FORD STATION WAGON**, 1959. \$300. Needs 40 valve job. Some small body work. Otherwise perfect. Call Plymouth 9-0242 between 6 P.M. and 10 P.M. 1-31

**RATTAN SET**, couch, two chairs, and table. Rubber from custom, custom made slip covers. Very good condition. Also folding day bed, excellent condition. Call North 7-6937. 1-31

**SHOES - WOMEN'S - NATURAL LEATHER**, 215 pairs - \$10.95, now reduced to \$8.90 & \$10.90, formerly \$12.90 to \$14.90. **TRED SHOES**, 238 Franklin Avenue, at the Center. Open Monday and Friday 11-12 P.M. 1-31

**LARGE CRIB AND CHIFFON ROBE**, waxed, good condition. \$35. Call North 7-9953 after 5 P.M. 1-31

**2 FURNISHED ROOMS**, private bath, private entrance. Gentleman preferred. Call North 7-8222. 1-17-63

**LARGE BRIGHT CHEERFUL FURNISHED ROOM**, near transportation. Kitchen privileges. Call Plymouth 9-8567. 1-17

**KAL'S GUEST HOUSE**, 116 Harrison Street (off Franklin Avenue), New Rochelle, N.Y. 10801. Men only 1-15-58 TF

**THE LATHAM HOUSE** - Large rooms, parking space, AP facilities. Near I.T.T. and Hoffman-La Roche. 144 Whitford Avenue (corner Nutley Avenue), Nutley. Call North 7-3555. 2-16-62 TF

**BELLEVILLE - LARGE FRONT BEDROOM** for gentleman. Newly furnished. Complete privacy. Residential area. Phone evenings and week-ends 759-5558. 1-17

**FOR RENT**

**CONYON AUTOMATIC IRONER** with metal chair. Used very little. A1 condition. Best offer. Call North 7-5690 evenings. 1-31

**BABY CRIB**, blond wood. High chair, play pen, new. Extra large size bassinet on wheels. All for \$50. Call North 7-4293 after 5 P.M. TF

**SHOES - WOMEN'S AND TEENS - AMERICAN GIRL, BUSKINS** - 238 pairs, flats, heels, now reduced to \$8.90 & \$8.90, formerly \$14.99 to \$29.99. **MODERN TRED SHOES**, 238 Franklin Avenue, at the Center. Open Monday and Friday evenings 11-9. 1-17-63

**FOR SALE**

**CHOICE LOT** - 50x104 on Kings and Terrace Avenues, Nutley. Price, \$7,000.00. North 7-4102 or North 7-1820. 1-31

**BUY SELL OR TRADE** investigate our trade - in plan. We will list your house for sale or consider buying it. If you purchase another house through our office. Let us know your requirements. Evenings and Holidays call Mrs. Kelly WE-9-3922. **STANLEY JOHNSON** - Realtor. 23 High Street North 7-8059 3-10-60 TF

**LISTINGS WANTED! BUYERS WAITING!**

**WHY DO WE SELL SO MANY HOMES?** Because I am the largest holder of Second Mortgages to finance purchases. **GIVE ME A RING JOHN J. McGRANE** Licensed Real Estate Broker NO-7-3231 7-16-59 TF

**NUTLEY - UNUSUAL ONE FAMILY - 7 rooms**, 2 full baths, 1st floor, 444 rooms, bath (modern); on 2nd, 3 room suite, bath. Gas Heat. Perfect arrangement for mother and daughter. \$19,900. **NEW RANCH**, St. Mary's of 6 over size rooms; modern kitchen; tile bath; gas heat; 2 car garage; many custom extras; price \$28,500; terms for qualified buyer. **YANTACAW SCHOOL**, arched center hall Colonial and 2 car garage; 4 bedrooms; colored tile bath; gas heat; alarm. storm screens; handy to N.Y. bus. **NEW RANCH**, St. Mary's of 6 over size rooms; modern kitchen; tile bath; gas heat; 2 car garage; many custom extras; price \$28,500; terms for qualified buyer. **J. I. KISLAK, Inc.** - Realtor. Open Sunday 581 Broad St., Nwk. MA 4-8020

**FOR RENT**

**FACTORY FOR RENT**

Nutley Location

Street Level

Approx. 2500 Sq. Feet

AVAILABLE IMMEDIATELY

Phone North 7-4000

**FOR SALE**

**\$3 - Have your roof, gutters, leaders and flashing inspected.** Any small, minor repair included. Aluminum combination windows and doors. General home maintenance. Please call before 8:30 A.M. or after 6 P.M. T. K. Oakes, North 7-2554. 4-58 TF

**WE BUY AND SELL PICTURES** - dishes, clocks, bric-a-brac, used furniture, guns, swords, etc. 333 Main Street, Belleville, Plymouth 9-1148. 6-28-62 TF

**USED DESKS, \$15 & UP.** Filing cabinets, chairs and tables. Edelman Office Furniture Warehouse, 200 Montgomery Street, Paterson, N. J. Lambert 3-6153. 5-26-60 TF

**SALE ON SLIPOVERS**

Upholstery and custom made draperies & piece slip cover, zippers, welting. Expert workmanship. \$89.00. Large selection of dress materials, curtains, trimmings. Visit our store - RIDGE FABRIC CENTER 597 Ridge Road, No. Arlington WY 1-0087. 9-26-61 TF

**TUB ENCLOSURES AND SHOWER DOORS.** Special clearance sale of standard tub enclosures and shower doors. Choice of design. Expert installation. Call for free demonstration. North 7-0283 or North 7-0389. 10-3-61 TF

**LIGHTING SPECIALTIES.** Bargain lighting fixtures, fixture kits, plug-in fixtures. Midgate to 48 inch workshop. Gro-Lux, Growth Units, Fixtures for flower growers. Lamp & fluorescent parts. Shopette, 650 Franklin Ave., North 7-6021. 12-20-62 TF

**ROAST BEEF SUPPER** January 17 from 5:30 P.M. to 7 P.M. Masonic Temple, Jerusalem St., Belleville. Adults \$1.50, Children 75 cents. Sponsored by Belleville Chapter No. 262, OES, Public welcome. 1-17

**NORGE AUTOMATIC WASHER** - good condition. \$65. Bissell carpet sweeper; odds and ends. Moving to apartment. Phone evenings, all day Saturday and Sunday. North 1-1382. 1-24

**CARDS** - boxed general assortment, \$1.90, by Fraxell-Lamont, exclusive with us, English wrapping paper \$3.5 a package, satin ribbon, pastel colors, 1500 in., \$7.95 per bolt. Bridge prizes, wholesale. Filomena's Gifts, 196 Chestnut St., North 7-4491. 1-24-63

**MOVING** - Weibull Gas Range, dishwasher, drop top, 4 P.M., porch, snow pump, fireplace equipment, wrought iron furniture, gardeners, hand mower many others. No 7-0582. 1-24-63

**THUNDERBIRD** - 1958 - 1/2 hard top, power brakes & steering. Excellent condition. Call NO-7-7604. 1-31

**PICTURES** - 11 early American prints. Beautifully framed. \$3.95 to \$39.95. Filomena's Gifts, 196 Chestnut Street, Nutley, North 7-4491. 1-31

**LIVING ROOM FURNITURE** - Modern sofa and two chairs, foam rubber. Excellent condition. Custom made slip covers with draw tape to match. Purchase individually or complete. Reasonably priced. Call North 7-7835. 1-31

**1955 CHEVROLET**, Hydramatic, four door sedan. Good condition. Best offer. Call after 5 P.M. Plymouth 9-0418. 1-31

**ENGLISH FORD STATION WAGON**, 1959. \$300. Needs 40 valve job. Some small body work. Otherwise perfect. Call Plymouth 9-0242 between 6 P.M. and 10 P.M. 1-31

**RATTAN SET**, couch, two chairs, and table. Rubber from custom, custom made slip covers. Very good condition. Also folding day bed, excellent condition. Call North 7-6937. 1-31

**SHOES - WOMEN'S - NATURAL LEATHER**, 215 pairs - \$10.95, now reduced to \$8.90 & \$10.90, formerly \$12.90 to \$14.90. **TRED SHOES**, 238 Franklin Avenue, at the Center. Open Monday and Friday 11-12 P.M. 1-31

**LARGE CRIB AND CHIFFON ROBE**, waxed, good condition. \$35. Call North 7-9953 after 5 P.M. 1-31

**2 FURNISHED ROOMS**, private bath, private entrance. Gentleman preferred. Call North 7-8222. 1-17-63

**LARGE BRIGHT CHEERFUL FURNISHED ROOM**, near transportation. Kitchen privileges. Call Plymouth 9-8567. 1-17

**KAL'S GUEST HOUSE**, 116 Harrison Street (off Franklin Avenue), New Rochelle, N.Y. 10801. Men only 1-15-58 TF

**THE LATHAM HOUSE** - Large rooms, parking space, AP facilities. Near I.T.T. and Hoffman-La Roche. 144 Whitford Avenue (corner Nutley Avenue), Nutley. Call North 7-3555. 2-16-62 TF

**BELLEVILLE - LARGE FRONT BEDROOM** for gentleman. Newly furnished. Complete privacy. Residential area. Phone evenings and week-ends 759-5558. 1-17

**FOR RENT**

**CONYON AUTOMATIC IRONER** with metal chair. Used very little. A1 condition. Best offer. Call North 7-5690 evenings. 1-31

**BABY CRIB**, blond wood. High chair, play pen, new. Extra large size bassinet on wheels. All for \$50. Call North 7-4293 after 5 P.M. TF

**SHOES - WOMEN'S AND TEENS - AMERICAN GIRL, BUSKINS** - 238 pairs, flats, heels, now reduced to \$8.90 & \$8.90, formerly \$14.99 to \$29.99. **MODERN TRED SHOES**, 238 Franklin Avenue, at the Center. Open Monday and Friday evenings 11-9. 1-17-63

**FOR SALE**

**CHOICE LOT** - 50x104 on Kings and Terrace Avenues, Nutley. Price, \$7,000.00. North 7-4102 or North 7-1820. 1-31

**BUY SELL OR TRADE** investigate our trade - in plan. We will list your house for sale or consider buying it. If you purchase another house through our office. Let us know your requirements. Evenings and Holidays call Mrs. Kelly WE-9-3922. **STANLEY JOHNSON** - Realtor. 23 High Street North 7-8059 3-10-60 TF

**LISTINGS WANTED! BUYERS WAITING!**

**WHY DO WE SELL SO MANY HOMES?** Because I am the largest holder of Second Mortgages to finance purchases. **GIVE ME A RING JOHN J. McGRANE** Licensed Real Estate Broker NO-7-3231 7-16-59 TF

**NUTLEY - UNUSUAL ONE FAMILY - 7 rooms**, 2 full baths, 1st floor, 444 rooms, bath (modern); on 2nd, 3 room suite, bath. Gas Heat. Perfect arrangement for mother and daughter. \$19,900. **NEW RANCH**, St. Mary's of 6 over size rooms; modern kitchen; tile bath; gas heat; 2 car garage; many custom extras; price \$28,500; terms for qualified buyer. **YANTACAW SCHOOL**, arched center hall Colonial and 2 car garage; 4 bedrooms; colored tile bath; gas heat; alarm. storm screens; handy to N.Y. bus. **NEW RANCH**, St. Mary's of 6 over size rooms; modern kitchen; tile bath; gas heat; 2 car garage; many custom extras; price \$28,500; terms for qualified buyer. **J. I. KISLAK, Inc.** - Realtor. Open Sunday 581 Broad St., Nwk. MA 4-8020

**FURNISHED ROOMS**

**LARGE CHEERFUL FURNISHED ROOM**, semi-private bath. Gentleman preferred. Call 667-1820. 1-31

**WELL FURNISHED ROOM**, double clothes closet. Near bathroom. Private home. Convenient to transportation. Gentleman. Call Plymouth 9-3794. 1-31

**LARGE COMFORTABLE ROOM** with cedar closet and TV. Kitchen privileges. Call Plymouth 1-0409. 1-31

**NICELY FURNISHED ROOM** in private home. No other rooms. Near all transportation. Call after 6 P.M. North 7-2548. 1-31

**GUTTERS LEADERS**

**HAVE YOU CHECKED YOUR GUTTERS** and leaders lately? Let us do it for you. Aluminum leaders and gutters sold and installed by **KING OF BELLEVILLE**, 164 Washington Avenue, Plymouth 9-1161. 1-19-61 TF

**HEARING AIDS**

**SOUTH BERGEN HEARING AID CENTER** Little's Pharmacy 547 Franklin Avenue, North 7-8822. All Makes of Hearing Aids. North 7-8822. 9-28-61 TF

**HELP WANTED**

**LANE EMPLOYMENT AGENCY** Accounts Receivable Bookkeepers Claims Secretaries Clerk-Typists Junior Clerks Stenographers Trainers 730 Broad St., Nwk. MA 7-5556 790 Broad St., Nwk. MA 7-5556 Hours Mon. thru Fri. 9:30 to 3:30 P.M. Mon. evening 7:30 P.M. 2-12-62 TF

**HELP WANTED**

**LANE EMPLOYMENT AGENCY** Accounts Receivable Bookkeepers Claims Secretaries Clerk-Typists Junior Clerks Stenographers Trainers 730 Broad St., Nwk. MA 7-5556 790 Broad St., Nwk. MA 7-5556 Hours Mon. thru Fri. 9:30 to 3:30 P.M. Mon. evening 7:30 P.M. 2-12-62 TF

**LISTINGS WANTED! BUYERS WAITING!**

**WHY DO WE SELL SO MANY HOMES?** Because I am the largest holder of Second Mortgages to finance purchases. **GIVE ME A RING JOHN J. McGRANE** Licensed Real Estate Broker NO-7-3231 7-16-59 TF

**NUTLEY - UNUSUAL ONE FAMILY - 7 rooms**, 2 full baths, 1st floor, 444 rooms, bath (modern); on 2nd, 3 room suite, bath. Gas Heat. Perfect arrangement for mother and daughter. \$19,900. **NEW RANCH**, St. Mary's of 6 over size rooms; modern kitchen; tile bath; gas heat; 2 car garage; many custom extras; price \$28,500; terms for qualified buyer. **YANTACAW SCHOOL**, arched center hall Colonial and 2 car garage; 4 bedrooms; colored tile bath; gas heat; alarm. storm screens; handy to N.Y. bus. **NEW RANCH**, St. Mary's of 6 over size rooms; modern kitchen; tile bath; gas heat; 2 car garage; many custom extras; price \$28,500; terms for qualified buyer. **J. I. KISLAK, Inc.** - Realtor. Open Sunday 581 Broad St., Nwk. MA 4-8020

**BELLEVILLE - LARGE FRONT BEDROOM** for gentleman. Newly furnished. Complete privacy. Residential area. Phone evenings and week-ends 759-5558. 1-17

**FOR RENT**

**CONYON AUTOMATIC IRONER** with metal chair. Used very little. A1 condition. Best offer. Call North 7-5690 evenings. 1-31

**BABY CRIB**, blond wood. High chair, play pen, new. Extra large size bassinet on wheels. All for \$50. Call North 7-4293 after 5 P.M. TF

**SHOES - WOMEN'S AND TEENS - AMERICAN GIRL, BUSKINS** - 238 pairs, flats, heels, now reduced to \$8.90 & \$8.90, formerly \$14.99 to \$29.99. **MODERN TRED SHOES**, 238 Franklin Avenue, at the Center. Open Monday and Friday evenings 11-9. 1-17-63

**FOR SALE**

**CHOICE LOT** - 50x104 on Kings and Terrace Avenues, Nutley. Price, \$7,000.00. North 7-4102 or North 7-1820. 1-31

**BUY SELL OR TRADE** investigate our trade - in plan. We will list your house for sale or consider buying it. If you purchase another house through our office. Let us know your requirements. Evenings and Holidays call Mrs. Kelly WE-9-3922. **STANLEY JOHNSON** - Realtor. 23 High Street North 7-8059 3-10-60 TF

**LISTINGS WANTED! BUYERS WAITING!**

**WHY DO WE SELL SO MANY HOMES?** Because I am the largest holder of Second Mortgages to finance purchases. **GIVE ME A RING JOHN J. McGRANE** Licensed Real Estate Broker NO-7-3231 7-16-59 TF

**NUTLEY - UNUSUAL ONE FAMILY - 7 rooms**, 2 full baths, 1st floor, 444 rooms, bath (modern); on 2nd, 3 room suite, bath. Gas Heat. Perfect arrangement for mother and daughter. \$19,900. **NEW RANCH**, St. Mary's of 6 over size rooms; modern kitchen; tile bath; gas heat; 2 car garage; many custom extras; price \$28,500; terms for qualified buyer. **YANTACAW SCHOOL**, arched center hall Colonial and 2 car garage; 4 bedrooms; colored tile bath; gas heat; alarm. storm screens; handy to N.Y. bus. **NEW RANCH**, St. Mary's of 6 over size rooms; modern kitchen; tile bath; gas heat; 2 car garage; many custom extras; price \$28,500; terms for qualified buyer. **J. I. KISLAK, Inc.** - Realtor. Open Sunday 581 Broad St., Nwk. MA 4-8020

**BELLEVILLE - LARGE FRONT BEDROOM** for gentleman. Newly furnished. Complete privacy. Residential area. Phone evenings and week-ends 759-5558. 1-17

**FOR RENT**

**CONYON AUTOMATIC IRONER** with metal chair. Used very little. A1 condition. Best offer. Call North 7-5690 evenings. 1-31

**BABY CRIB**, blond wood. High chair, play pen, new. Extra large size bassinet on wheels. All for \$50. Call North 7-4293 after 5 P.M. TF

**HELP WANTED**

**FEMALE**

**WOMAN TO CLEAN HOUSE** for couple, Saturday only. Reply to Box 104, The Nutley Sun, 164 Franklin Avenue, Nutley. 1-24

**MIDDLE AGED WOMAN** for general housework. Must be able to answer phone pleasantly. Need in appearance. Honest and reliable. One or two days a week. Write Box 103, The Nutley Sun, 164 Franklin Avenue, Nutley, N.J. 1-10-63 TF

**ASSISTANT CASHIER.** Opportunity to meet many people. Pleasant working conditions. Good salary and excellent benefits. Young lady. Excellent opportunity for a high school graduate of average typing ability, who is dependable, alert and enjoys dealing with the public. American Finance Corp., 228 Washington Avenue, Belleville. 1-24

**PART TIME WOMAN** to be jewelry stylist. Earn \$12. to \$25. per evening. No investment. No delivery. No collecting. Call North 7-5821 or PR-9-6334. 1-31

**HELP WANTED**

**LANE EMPLOYMENT AGENCY** Accounts Receivable Bookkeepers Claims Secretaries Clerk-Typists Junior Clerks Stenographers Trainers 730 Broad St., Nwk. MA 7-5556 790 Broad St., Nwk. MA 7-5556 Hours Mon. thru Fri. 9:30 to 3:30 P.M. Mon. evening 7:30 P.M. 2-12-62 TF

**HELP WANTED**

**LANE EMPLOYMENT AGENCY** Accounts Receivable Bookkeepers Claims Secretaries Clerk-Typists Junior Clerks Stenographers Trainers 730 Broad St., Nwk. MA 7-5556 790 Broad St., Nwk. MA 7-5556 Hours Mon. thru Fri. 9:30 to 3:30 P.M. Mon. evening 7:30 P.M. 2-12-62 TF

**HELP WANTED**

**LANE EMPLOYMENT AGENCY** Accounts Receivable Bookkeepers Claims Secretaries Clerk-Typists Junior Clerks Stenographers Trainers 730 Broad St., Nwk. MA 7-5556 790 Broad St., Nwk. MA 7-5556 Hours Mon. thru Fri. 9:30 to 3:30 P.M. Mon. evening 7:30 P.M. 2-12-62 TF

**HELP WANTED**

**LANE EMPLOYMENT AGENCY** Accounts Receivable Bookkeepers Claims Secretaries Clerk-Typists Junior Clerks Stenographers Trainers 730 Broad St., Nwk. MA 7-5556 790 Broad St., Nwk. MA 7-5556 Hours Mon. thru Fri. 9:30 to 3:30 P.M. Mon. evening 7:30 P.M. 2-12-62 TF

**HELP WANTED**



**RUG CLEANING**  
RUG AND FURNITURE Cleaning, carpet installed, repaired, bound, etc. 24 years of quality service in carpet maintenance. Estimates free on obligation. The GARY SERVICE North 7-8677.  
1-10-58TF

**SERVICE**  
PASSAGE PRIVATE NURSING HOME, for chronically ill, convalescent and bed-ridden; male and female; day and night nurses. Telephone PReston 9-0028.  
2-9-56 TF

A-1 PIANO TUNING  
Repairing and polishing, players a specialty. Factory expert since 1930. All work guaranteed. Ciclio, 205 Forest Street, Belleville. Telephone Plymouth 9-2614. 5-10-62 TF

DAVIS-TAYLOR SHADE SHOP  
Albert W. Taylor, Prop.  
Wholesale - Retail  
Window Shade Manufacturers  
Venetian Blinds  
360 Passaic Ave., North 7-0491.  
TF

ALL MAKES OF ACCORDIONS REPAIRED. Call North 7-1446.  
TF

Batteries & Accessories, Repair All Makes of Hearing Aids SOUTH BERGEN HEARING CENTER Little's Pharmacy 54 Franklin Avenue North 7-0822 GENEVE 8-1042 12-22-54 TF

ALL MAKES AUTOMATIC WASHERS, DRYERS, REFRIGERATORS, FREEZERS, air conditioners repaired. Factory supervised Philco and Bendix service. 16 years experience. E. Crossley Service, NO 7-9278. 3-6-58 TF

L. GEORGE - Pianos tuned and repaired. Plymouth 9-4866.  
11-8-52 TF

MILL TRUCKING-24 hour service. Snow plowing, light hauling. Attics and cellars cleaned. No job too small. Call anytime North 7-6279.  
12-13-62 TF

SMALL ELECTRICAL APPLIANCES REPAIRED - Have your toaster, steam spray dry iron, percolators, hot plates, rotisseries repaired. Reasonably priced. Community Hardware Company, 327 Union Avenue, Belleville.  
1-10-53TF

REFRIGERATORS, FREEZERS. Fast service. Commercial work. Are Inc. Plymouth 1-0702.  
1-17-63 TF

**SEWING MACHINES**  
ANY MAKE OR MODEL expertly repaired. Estimate \$1. Used sewing machines, \$32.00 and up. F. Wissing, 82 Watchung Ave., Upper Montclair, Pilgrim 8-1881.  
8-23-62TF

**SHORING**  
SAGGING WALLS, floors, partitions, front porches, garages and overhanging roofs, jacked up to proper level. Underpinning of masonry walls, also general contracting, Millwright and Rigging. All work guaranteed and insured. HARRY CAMERMAN Wyman 1-4492-Humboldt 2-5899  
6-8-61 TF

**TELEVISION**  
TELEVISION REPAIRS - A1's Video Service, 31 Holmes St. Netherly, North 1-253 weekdays after 5:30 P.M., all day Saturday, Sunday. Repairs and good will guaranteed. 5-5-60 TF

**TILE CONTRACTORS**  
MARALDO Tile & Terraço Co. Industrial-Commercial Residential-Repairing 82 Union Avenue North 7-5021 12-15-60 TF

**TREE SERVICE**  
WEISCHBEL'S TREE SERVICE. Insured. Telephone NO 7-0966.  
6-11-59 TF

**TUB ENCLOSURES**  
SHOWER - TUB ENCLOSURES, standard 5 ft., heavy duty glass with two internal bars, \$39.00. King of Belleville, 164 Washington Ave., Belleville, PL 9-1161.  
8-30-62 TF

**UPHOLSTERY**  
SLIP COVERS - Reupholstery, custom upholstered pieces of any workmanship, wide variety of samples. Nicholas Spirko, 421 Franklin Avenue, Telephone North 7-2529.  
TF

REUPHOLSTER YOUR OLD FURNITURE, custom work. Reasonable prices. Bruce W. Ellisworth, 661-1330.  
1-24

## Sandfort Makes Charge Of Harassment

Governor Hughes is permitting the dairy milk industry to activate its campaign of harassment against pig milk dairies and lower milk prices, Pete Sandfort of Garden State Farms has charged.

His statement came after a lengthy all-day hearing before OMI in which Sandfort pleaded unsuccessfully for permission to

**WANTED TO BUY**  
DO YOU HAVE old gold jewelry you no longer use? We buy gold, platinum, diamonds, dental bridgework, etc. Lane Jewelers (at the Center) North 7-4466. 4-25-59 TF

GOOD PLANO WANTED, Steinway or other. Please call Mr. Heinz, Market 3-6585. 1-24

USED SET OF ENCYCLOPEDIA BRITANNICA. Call North 7-1879 - 8 P.M. or after. 1-17-63 TF

**WANTED TO RENT**  
APARTMENT WANTED! Couple with one child, desire four rooms with heat. Nutley or Belleville vicinity. Please call OR 5-7482.

WORK WANTED  
ODD JOB SERVICE. Cellars, attics and yards cleaned. Junk and rubbish removed. Telephone Pilgrim 4-3284. 2-12-59 TF

LIGHT HAULING. Evenings and weekends. Call 667-6314. 8-23-62 TF

INTERIOR PAINTING, block ceilings, carpentry, window chains, light hauling, floor tile, odd jobs. Free estimates. Call North 7-5090 week days in the evenings. Weekends, anytime. 8-23-62TF

NUTLEY RESIDENT DESIRES PART TIME or temporary work. General office. Enjoys figure work. Dependable. Experienced. Call North 7-7450. 1-31

**YOUR MONEY EARNS 10% Payable Monthly**  
Minimum Investment \$500  
N.J. Residents Only

FIRST NATIONAL CREDIT CORP.  
60 PARK PLACE, NEWARK, N.J. 07102  
PLEASE SEND FREE BOOKLET  
Name \_\_\_\_\_  
Address \_\_\_\_\_  
City \_\_\_\_\_  
State \_\_\_\_\_  
Phone \_\_\_\_\_

**SAVING ON BETTER USED CARS!**  
CORVETTE '61  
FUEL INJECTION. Convertible R. & H. 4 speed gear box. Absolutely brand new original condition. Must be seen.  
SAVE \$2695

PONTIAC '62  
Bonneville Convertible. STAN-DAARD SHIF, R. & H. Excellent condition.  
\$2695

PONTIAC '61  
Bonneville 4 dr. H.T. - R. & H. Hydraulic - Power Steering & Brakes. Exceptionally clean. Artic white - contrasting blue interior.  
\$2195

FORD '61  
Galaxie Convertible V-8 R. & H. Fordomatic, Power Steering. Exceptional orig. condition.  
\$1795

CADILLAC '57  
Coupe de Ville. R. & H. Full Power. Immaculate original condition. See and drive this "buff".  
\$1595

BUICK '59  
Injicta 4 door hard top, Dynaflo, Power steering and power brakes.  
\$1295

FORD '59  
Galaxie - 2 dr. - R. & H. Fordomatic - Extra clean. \$995

PLYMOUTH '56  
Wagon R. & H. push button drive. Xtra good transportation.  
\$345

PONTIAC '62  
Bonneville Convertible. R. & H. Hydraulic - Power Steering & Brakes - Bucket Seats - Like New.  
\$2795

CHEVROLET '62  
Impala, 4 Dr. Hard Top, 6 cyl., Powerglide, Power Steering, Original 5,000 Mile-Car, R. & H.  
\$2395

CHEVROLET '61  
Impala, 2 Dr. Hard Top, Powerglide, R. & H. Power Steering.  
\$1995

PLYMOUTH '61  
Fury, 2 Dr. Hard Top, R. & H. V-8, Push Button Drive, Power Steering.  
\$1595

CHEVROLET '59  
Impala, 2 Dr. Hard Top, V-8, Powerglide, R. & H. \$1395

DODGE '59  
Coronet, 2 Dr. Hard Top, R. & H. Push Button Drive, Power Steering.  
\$995

CHEVROLET '58  
Impala, V-8, Convertible, R. & H. (Standard Shift) \$795

FORD '56  
4 door Wagon R. & H. Fordomatic. Real good condition.  
\$395

**GATTI PONTIAC**  
645 Washington Avenue Belleville, N.J. PL 1-0400

sell milk in the Garden State Farms Dairy Store in North Haledon. "I cannot understand," Sandfort said, "how the Governor could be so vitally interested in the consumer having the benefits of lower milk prices a few days prior to the November election, and be so unconcerned now."

"The tactics used by OMI in the hearing recently are exactly the same as those we fought month after month in our long battle for freedom of enterprise in the New Jersey dairy industry."

"When the Governor lifted price controls, we believed that he sincerely had the interest of the consumer at heart. Now, hundreds of consumers, who pleaded for the chance to give their families the milk they need at competitive prices, are asking whether his action was one of political expediency."

The hearing was on Sandfort's appeal from a ruling handed down by OMI refusing a license for Garden State Farms milk in the North Haledon store. OMI based its refusal on controversial regulation H-13 governing the issuance of new licenses.

Also refused was a license to sell milk in the dairy's Walkway store. The North Haledon store has been open since December 27, but has not been allowed to sell milk. The Walkway store is scheduled to open soon.

Garden State Farms charges that the intent of the legislature in enacting the 180-day emergency milk law was not to limit normal expansion of established dairies. The company further charges that the December 5 retroactivity of the legislation was unconstitutional.

Nicholas Marlin, Garden State Farms attorney, said at the hearing that the firm had made an investment of \$80,000 in these additional services to consumers prior to December 5.

Sandfort said that a survey conducted in the North Haledon area showed home delivered milk prices to be stabilized at 52 cents for half gallon paper cartons and 31 cents in quart paper containers. It is almost impossible to find commercial glass jugs because dairies and other stores are "protected" by OMI from competition on these family-size, reusable containers.

"I cannot understand how the

## Turbett Gives Hints On Filling Out Tax Forms

Taking note that tax time is at hand again, Frank S. Turbett, Jr., Director of Internal Revenue, said this week had some early advice for taxpayers in the Newark District. He emphasized these points for both individual and business taxpayers.

All applicable items on the return form must be filled in and in the proper sequence. This means totals from attached schedules must be carried forward to the face of the return.

best interest of public health and welfare is being served by denying these people the right to earn substantial savings on the most essential food they buy for their families," Sandfort said.

Garden State Farms milk in glass jugs sells for 44 cents a half gallon and 8 cents a gallon, 36 cents a gallon below home-delivered quarts and as much as 17 cents a gallon below most food stores.

If schedules in the return are not sufficient for needs of the taxpayer, substitute schedules must follow the official format, contain all the required information, and be attached in the same sequence as on the tax return. Returns or schedules reproduced by copying machines and other devices should meet the standards of paper quality and legibility of the official forms. Taxpayers receiving pre-addressed forms should use these forms where possible to minimize chance of error in identification.

Mr. Turbett also reminded taxpayers that their tax account numbers are required by law on all returns filed in 1963. This is the social security number of the individual, or a similar, assigned account number for persons not covered by social security. Failure to show account number may delay issuance of any refund due the taxpayer.

Persons who do not already have a number should apply at

one to the District Director of Internal Revenue, or the District Director of the Social Security administration.

**FOLLOW THESE RULES FOR SPACE HEATERS**  
A flammable liquid space heater may look entirely safe and doable, but it can become a serious fire demon when improperly used. Heed these vital rules for safe heater use: Be sure that it is Underwriters Laboratories approved. Rely on manufacturers' instructions for proper operation. Be sure the room has a good fresh air supply. Place heater level, well away from flammable materials. Always shut off heater before retiring or leaving the premises.

**OLYMPIC BOWL**  
NOW OPEN  
NEW MODERN  
BILLIARD ROOM  
Always Open Bowling At Olympic  
BRING THE FAMILY FOR THE EVENING  
679 Washington Ave., Belleville Phone PL 1-2111


No matter what you've been offered  
**LEARNARD CHEVROLET**  
WILL BETTER THE DEAL!  
SEE US TODAY  
514 Washington Ave., BELLEVILLE  
Open Evenings, Wed. 'til 6. Closed Sundays - PL 9-4200

**ACME MARKETS**  
72<sup>nd</sup> BIRTHDAY  
THE FIRST OF OUR BIRTHDAY GIFTS TO YOU!  
Famous Top-Quality Lancaster Brand  
**RIB ROAST**  
(Regular Style) lb. **59c**  
Oven-Ready lb. 69c  
1st Cuts Slightly Higher  
Fancy Large ROASTING CHICKENS lb. 45c  
Smoked, Short Shank CALAS Well Trimmed! lb. 35c  
CHUCK ROAST LANCASTER BRAND lb. 49c  
GROUND CHUCK LANCASTER BRAND lb. 69c  
CHUCK STEAKS LANCASTER BRAND lb. 59c  
STEWING BEEF LEAN CUBES lb. 79c  
PLATE SOUP MEAT lb. 23c  
SAUSAGE LANCASTER BRAND - PURE PORK lb. 49c  
SCRAPPLE LANCASTER BRAND lb. 29c  
CANNED CHICKEN LANCASTER BRAND 3-lb. 3-oz. can 99c  
ALSO SWIFT CHICKEN AND DUMPLING!  
Advertised prices effective Wed. thru Sat., Jan. 16 to 19. We reserve the right to limit quantities. Not responsible for typographical errors.  
**GREEN GIANT PEAS** 5 17-oz. 5c  
**STAR-KIST SOLID WHITE TUNA** 7-oz. can 31c  
**GOLD MEDAL FLOUR** 4c Off 5 lb. bag 49c  
**KRAFT MACARONI DINNER** 2 7 1/2-oz. pkgs. 29c  
**DUNCAN HINES** Layer Cake Mixes 29c  
Lemon Supreme, Fudge Marble, Yellow, Devil's, White, Cherry Supreme  
**GOOD LUCK MARGARINE** 2 16-oz. pkgs. 49c  
**FROZEN FOODS**  
Ideal French Cut 6 9-oz. pkgs. 1  
Birds Eye Chopped 6 10-oz. pkgs. 1  
Ideal - Spears 3 10-oz. pkgs. 59c  
**BAKERY**  
Apple or Pineapple 2 for \$1  
**PIES**  
RUM ICED CHIFFON each 59c  
**Velveta** KRAFT 2-lb. loaf 79c  
"YOU NEVER HAD IT SO FRESH"  
SUNKIST NAVEL  
**Oranges** Large Size 10 for 49c  
GRAPES FANCY EMPEROR 2 lbs. 29c  
FRESH, CRISP  
ESCAROLE or CHICORY 2 lbs. 25c  
FRESH  
RADISHES 6-oz. bag 5c SCALLIONS bunch 5c  
**FREE 30 5&H GREEN STAMPS**  
WITH ANY PURCHASE AND THIS COUPON  
Name \_\_\_\_\_  
Address \_\_\_\_\_  
Expires Sat., Jan. 19  
Limit one coupon per shopping family  
**FREE 30 5&H GREEN STAMPS**  
WITH PURCHASE OF 1/2 GALLON OF LOUELLA BUTTER  
Name \_\_\_\_\_  
Address \_\_\_\_\_  
Expires Sat., Jan. 19  
Limit one coupon per shopping family  
**FREE 30 5&H GREEN STAMPS**  
WITH PURCHASE OF 1/2 GALLON OF ICE CREAM  
Name \_\_\_\_\_  
Address \_\_\_\_\_  
Expires Sat., Jan. 19  
Limit one coupon per shopping family  
**FREE 50 5&H GREEN STAMPS**  
WITH PURCHASE OF \$2.00 OR MORE OF PRODUCE  
Name \_\_\_\_\_  
Address \_\_\_\_\_  
Expires Sat., Jan. 19  
Limit one coupon per shopping family  
**FREE 30 5&H GREEN STAMPS**  
WITH PURCHASE OF 6 1/2 OZ. TUBE OF COLGATE TOOTHPASTE  
Name \_\_\_\_\_  
Address \_\_\_\_\_  
Expires Sat., Jan. 19  
Limit one coupon per shopping family  
**FREE 30 5&H GREEN STAMPS**  
WITH PURCHASE OF 1/2 GALLON OF LOUELLA EVAP. MILK  
Name \_\_\_\_\_  
Address \_\_\_\_\_  
Expires Sat., Jan. 19  
Limit one coupon per shopping family  
**FREE 30 5&H GREEN STAMPS**  
WITH PURCHASE OF 1/2 GALLON OF LOUELLA CANNED CHICKEN or Swift Chicken & Dumplings  
Name \_\_\_\_\_  
Address \_\_\_\_\_  
Expires Sat., Jan. 19  
Limit one coupon per shopping family



**BELLEVILLE TYPEWRITER & ADDING MACHINE CO.**  
**WE REBUILD — SERVICE**  
All Makes **PL 1-0068**  
**TYPEWRITERS & ADDERS**  
Store Hours: 9 a.m. - 5:30 p.m.  
Portables - Standards Mon. - Sat.  
103 Washington Ave. (Sales)  
(cor. of William) New & Rebuilt

**California and Florida Specialists**  
**If You Must Move - Let Us Move You**



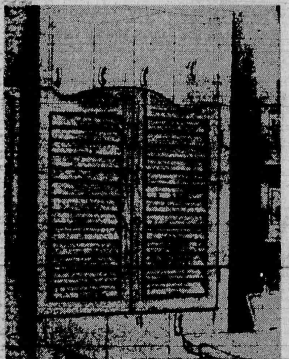
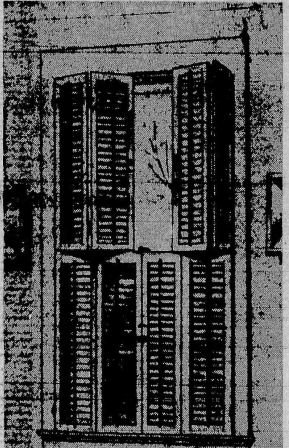
**JOS. RAASER**  
**Moving And Storage Warehousing**  
Owned and Operated by  
**ROBERT DUKIN**  
Expert Trained Personnel on All Jobs

Across The Street or Across The Country  
Free Estimates With No Obligation

PL 9-1822  
494 CORTLANDT ST. BELLEVILLE

**REMODEL YOUR HOME**  
**at bargain prices**

with  
**WOODCRAFT QUALITY SHUTTERS**



For Information On Just How Inexpensive  
Call: NO 7-7000

**VIOLA BROS., Inc.**  
"YOUR LUMBER & MASON MART"

178-180 Washington Avenue Nutley, N. J.

# Candidates For Board Of Education Seats Outline Their Qualifications To Public

## Juliano Gives His Stand On School Matters

(Editor's note: Mr. Juliano is a Belleville Board of Education member who is seeking re-election in the forthcoming school elections. The following statement is his thoughts on educational matters.)

The responsibilities of citizenship in a democratic society imply informed, educated citizens. The growth of our nation demands the fullest possible development of our talent, new technological developments in industry and the requirements of national defense have placed a high premium upon education and skill. At the same time, there has been, during recent years, an unprecedented increase of school-age population.

These facts give special urgency to the problem of ensuring equality of educational opportunity for all.

**State, Town Responsible**

Education is first and foremost a local and state responsibility. Many of the instances of inequality that currently exist are clearly the fault of localities and states which have not measured up to their educational responsibilities.

In addition to maximum effort on the state and local levels, there is a dire need for a program of federal aid where necessary to maintain at the very least minimum standards.



NICHOLAS JULIANO

**We Must Have Help**

Our country is a nation of states which have unequal resources. In a nation such as ours, it is senseless and utterly folly to place the financial burden of education entirely upon the local community. Pseudo-philosophical cliches can no longer obscure the paramount fact that federal aid to education is both proper and necessary.

So long as education continues to be financed entirely by state and local governments, school expansion and improvement costs must be faced realistically and rationally.

**Our Human Losses**

The human tragedy and ultimately the social catastrophe of our times is, the unconscionable waste of human resources which are invariably ignored and obscured by the somewhat magnified "battle of tax points" waged by the pious obstructionists. The most flagrant waste is represented by the 40 per cent rate of high school "drop-outs." The number of drop-outs, based upon current trends, will reach a staggering estimate of 7,500,000 young people who will enter the work force during the 1960's WITHOUT COMPLETING THE 12th GRADE!

**Children Need Guidance**

Helping these students reach a point nearer their fullest potential should be one of the most rewarding tasks of modern education as well as a tremendous asset to community and nation alike.

Far too often these students are left to themselves, allowed to drift through school without motivation, to drop out somewhere during their high school years, and to go out into the world ill-fitted for the employment opportunities of the future. Certainly, a basic high school education should be the common heritage of all present day Americans, our children included!

**LODGE 108 TO CONFER DEGREES JANUARY 23**

Belleville Lodge 108, F. & A. M. will confer the Entered Apprentice degree upon candidates-in-waiting Wednesday, January 23, at the Masonic Temple, 126 Jerome Avenue.

The degree will be conferred

## Guglicelli In Race For Office

(Editor's note: Albert Guglicelli, a long-time resident of Belleville, has thrown his hat into the election arena and is making a try for a Board of Education for the first time. He lives at 75 Lake Street.)

As a candidate for a seat on the School Board, I would like to present to the people my qualifications.

I am 54 years of age, married, have three children and was born in New York City. I've lived in Belleville 40 years. My children have been educated in the Belleville school system. I received my education in New York, and studied law and industrial chemistry. I was a veteran with the 16th Infantry, First Division, Company A, stationed at both Fort Jay and Fort Wood in New York. Both my sons, Roger and Gerald were also soldiers stationed in Alaska and Georgia.

A former businessman, I was the owner of the Dixie Shake Corporation, a chocolate drink concern, and the Rogers Chemicals.

During the depression years I was employed by the state of New Jersey as a traffic surveyor, an IBM machine operator, research editor at 1060 Broad Street, and in the payroll department with the U. S. Department of Agriculture. I was also with the County of Essex for five years. I am now retired.

I love children and have taught many boys how to play baseball, football, and basketball. Some may have been your sons with two pennants for St. Anthony's CYO team under Father Gillick. I had a try-out with the old St. Louis Browns in 1938. I'm honest, sincere, trustworthy, capable, and understanding.

I am not seeking a seat on the School Board because it gives me a job, but to protect the interests of the people. The Board of Education, with the exception of the two newly-elected members, have refused to recognize the 732 vote mandate by the people in the election against building the new high school on land in the bog area, which is nothing but a swamp, it's dangerous, and costly, they also refused to recognize the defeat by the people for the return of the land in the bog area, which was defeated in every district at the general election. It is this type of misrepresentation that is giving Belleville a bad name.

The people need me, and I need them to clean up the mess so they can breathe fresh air again, there is much work to be done with our school buildings which have long been neglected.

And the cost of the new high school, approved by the people must be upheld, without skimping of any kind which they now claim may reach four million dollars, the original price for the complete package was \$2,900,000.

A vote for me now means protection for you, against waste, corruption, discrimination, and the evils of bad government. I hope the good people all over town have the courage to stand on their own two feet, and give me one of their votes, I have their interest at heart.

**ALBERT GUGLIELLI**

**Telephone Official Explains An American System of Enterprise**

Frank L. Phillips, an assistant vice president of the New Jersey Bell Telephone Company, will discuss the role of profits in the American system of free enterprise at a meeting of Belleville Chamber of Commerce at Fazio's Restaurant, January 31.

Phillips will outline the "profits, performance and progress" theory which says profit is an indispensable element in progress.

He will also stress the importance of telling the "profit story" to our children so they can understand that "our country has grown great on the two-way profit system."

The meeting is a dinner-dance meeting with the installation of officers as part of the program.

with the lodge's officers in their regular stations and places, with a lecture delivered by Fred W. Holloway, Junior Wardens.

Lodge members observing their Masonic birthdays January will be honored at this communication.

Alvin W. Outcall, Worshipful Master will open the lodge promptly at 7 p.m. All Master Masons are invited to attend.

## School Drop-outs Concern Arvidson

(Editor's note: Ernest S. Arvidson, a tool manufacturer, is founding out his third year on the Belleville Board of Education as vice-president, and is now seeking re-election as an incumbent.)

The worth of any enterprise must be measured by the overall value and quality of its end product. Our private enterprise system assures competition that results in a continuing program of improvement.

Education faces competition of one particular type, when a child reaches the legal age and ends compulsory attendance in school, the opportunity to secure employment and the lure of earning wages is a great temptation to the student. Our schools must be of such caliber that the student desires to complete high school.

Many people who have not completed secondary school have reached high positions in our society, and certainly the great majority have become useful citizens; but from the ranks of those who have become educationally discouraged have become those who are chronically on the unemployed rolls.

**New High School Needed**

A paradox of our times is the high unemployment rolls and the page-after-page of "help wanted" advertisements.

The very basic start of a program in Belleville to insure that all our children will profit from their public school experience, and remember those experiences with pleasure, is the added facilities which will be in our new high school.

Using these facilities wisely we can give college bound, and non-college bound, students a well rounded curriculum.

**School Incentive Wanted**

Essex county vocational schools provide excellent programs for a particular vocation. The curriculum in our new school will not be in competition with those schools. We must try to present a program for the terminal student which will give needed information, and provide the widest latitude to enable the student to select a vocation in which he will be happy and in which he can excel.

We must give him a strong foundation in the humanities. He should have a good working knowledge of the functions of our economy in our free enterprise system.

**Changing Vocations**

Vocations will be constantly changing during the life span of these students, changing much more rapidly than any time in the past. We should prepare our students to become adaptable to these changes. Education is a lifelong process. To the student of today this is more true and more essential than ever before.

My conclusion, then, is that it is not education, but the failure to educate that is expensive.

## Entertaining Couple



## Donald Fessler Wants On Board

(Editor's note: Donald W. Fessler, 31, moved to Belleville 11 years ago from Newark where he graduated from Arts High School. He later attended Newark College of Engineering. This is his first effort to gain public office. He lives at 180 Bell Street with his wife, the former Virginia Norman.)

I'm interested in becoming a member of the Belleville Board of Education, because I believe that all citizens should be willing to sacrifice some of their time in civic endeavor. I feel that the present and past School Board has been very lax in presenting all of the facts and aspects of the educational expansion program to the people. They have lost contact with the public and, therefore, lost the confidence of the people.

There should be open board meetings on all subjects that are pertinent. Where personal problems might arise, all efforts must be expended in propriety and good taste.

I feel that all of my decisions are open to public challenge, and only in this way could I fulfill my obligations to the tax-paying citizens.

I will weigh 't of my decisions and will welcome constructive criticism.

Since education takes a large share of the tax dollar, we must always look for ways of economy salaries of teachers should go hand in hand with their ability. We should be interested in better educators for our children, and pay more attention to the salaries of the educated teacher (who also enjoys working in Belleville) rather than some who might be using Belleville as a stepping stone to better jobs elsewhere.

We must eliminate extravagance and frills that do not lend themselves to education purposes. All purchases and monies should be used in a practical nature.

I am presently employed by Trought Associates in plant engineering and proposal work. My formal education has included special courses in engineering.

## William Pelia Makes Board Bid

(Editor's Note: William A. Pelia is a 27-year-old Newark elementary school teacher who is trying for a berth on the Board of Education. He lives at 186 Division St. with his wife, Catherine, and their 14-month-old son.)

"Since our nation's early colonial days, the American people have had an abiding faith in the power of education, said William A. Pelia recently. "Our progress through the years has proven that this faith is well founded. Now, more than ever, the town of Belleville needs and deserves the most enlightened and energetic representation it can acquire so that this faith continues to grow."

Belleville first, he says.

"The schools belong to the citizens of Belleville who directly maintain them and a school board member is the representative of these people. With the above as my guide and with a full sense of the responsibility involved, I seek membership on the Belleville Board of Education."

Pelia is a Newark teacher. He has had experience with every age level in education, having taught in the elementary school, worked in Newark's recreation program, and taught adults both while on active duty and in the Newark Americanization Program.

**Educational Background**

He received his Bachelor of Science degree in education from Newark State College, and Master of Arts degree in education from Seton Hall University. At present he is taking course work beyond the Master's Program at Seton Hall University.

In June he intends to begin work toward a doctorate degree at Columbia University, where his application is now under consideration.

**The Marital State**

Pelia is married to the former Miss Catherine Minini, who is also a Newark teacher. Mrs. Pelia did her student teaching in Belleville Schools 3 and 8. They live at 186 Division Avenue and have a son Richard who is 13 months old.

## Belleville Sailor Is Aboard New Sub

Robert W. Hasal, electronics technician second class, USN, and son of Mr. and Mrs. Walter H. Hasal of 197 Stephens Street, was aboard the Polaris missile submarine USS Nathan Hale when she was launched Saturday, January 12, at Groton, Conn.

The Nathan Hale is the newest fleet ballistic missile submarine of the Lafayette class. She is nuclear-powered and can carry 16 medium range missiles with nuclear warheads.

## Duncan Freel Is Board Candidate

(Editor's note: Mr. Duncan M. Freel is a graduate of the University of Glasgow where he graduated with a B.S.M.E. He is employed by Western Electric in South Kearny and lives with his wife and six children at 76 Van Houten Place. He seeks election to the Belleville School Board.)

"I believe that education is not a political football, but rather the endeavors of all citizens to assume themselves that their children are afforded the best possible faculty and facilities available," said Freel one day last week.

"This is necessary to prepare our children for the ever-increasing complexities the future is presenting in this super-dynamic era in which we live."

Freel is a member of the Montclair Society of Engineers, an organization devoted to high academic and technical excellence. He is chairman of the program committee of the Science and Engineering Club of Western Electric, an organization dedicated to better education—standards, particularly in this area, and is Chairman of Pack 377 of the Boy Scouts of America.

He plans to utilize his background of technical and organizational skill to the Board of Education if elected.

## Seaman Molinari Is Now In Japan



ANTHONY F. MOLINARI

Anthony F. Molinari, son of Mr. and Mrs. Frank Molinari, 172 Malone Avenue, who is stationed aboard the USS Kawishiri, an oil tanker, was one of the men who received Meritorious Conduct Ashore Award.

This is the only ship ever to win this award five consecutive times. The Kawishiri, recently returned from Hong Kong, and is now in Japan on deployment.

Molinari attended, Bloomfield Technical High School before entering service three years ago. He will receive his discharge April 12. He has been overseas, and in Hawaii, for all his service.

## Finance Director A Big Marine



THOMAS M. MOWEN

Thomas M. Mowen, 259 Hornblower Avenue, Belleville, has been appointed Director of Finance at Clara Maass Memorial Hospital, executive director Albin H. Oberg announced today.

Mowen joined the hospital accounting staff last September, and had been associated with Daystrom, Inc., Murray Hill, since 1951. He attended Rutgers University majoring in business administration and accounting.

## A Big Marine



ROBERT LAIRD

Marine Pvt. Robert J. Laird recently ended a 20-day Christmas furlough at the home of his parents, Mr. and Mrs. Harry E. Laird, 204 Greylock Parkway, and has returned to the U. S. Marine Sea School at Parris Island, Va.

Pvt. Laird was graduated from boot camp at Parris Island, S.C. last November, and took advanced training at Camp Lejeune, N.C.